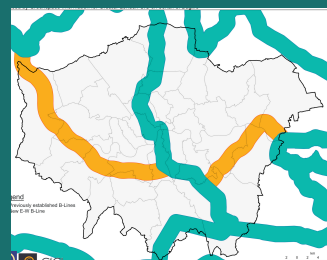
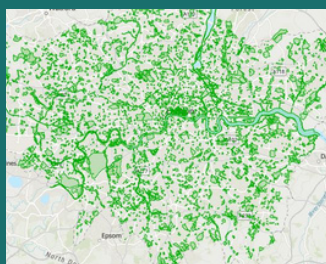


Greenspace Information for Greater London CIC













Annual Report 2022/23

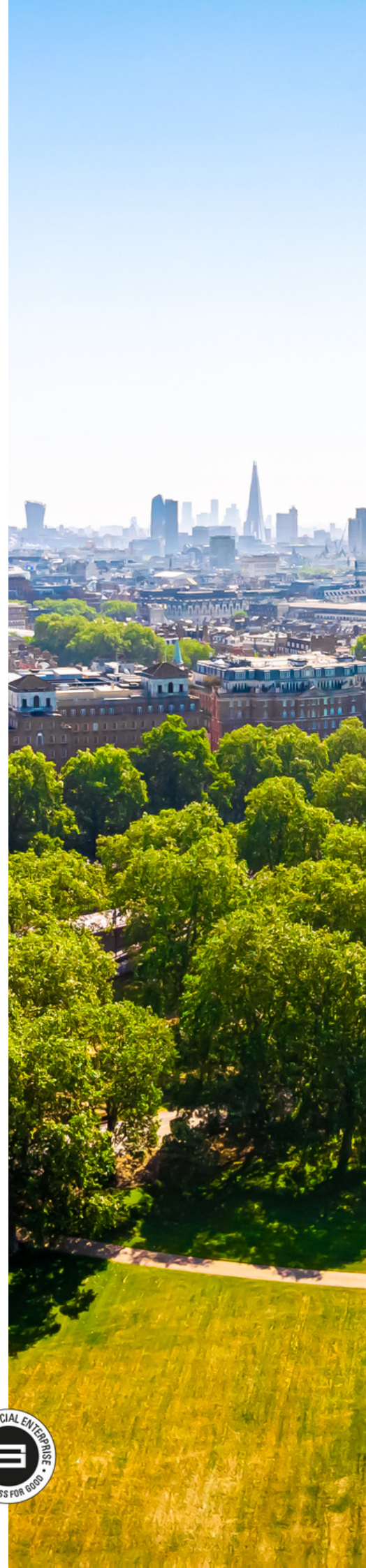


GiGL

Greenspace Information for Greater London CIC
the capital's environmental records centre

Contents

	CEO Overview of the Year	3
	Our Vision and Mission	4
	GiGL by Numbers	5
	Community Networks	6
	Community Offerings	
	Water Vole Recovery Programme	
	Professional Networks	9
	River Restoration Opportunities	
	Project Networks	11
	BE-BOP	
	London's B-Line	
	Ancient Woodland Inventory Project	
	Data Stewardship	14
	Open Data Review	
	Biodiversity Net Gain	16
	Pilot Projects	
	Engagement	
	Communications	17
	DiscoverLondon	
	Social Media	
	Acknowledgements	20
	Volunteers	
	Financial Summary	22
	Working with Us	23



A Year of Achievement and Growth



Mandy Rudd
Chief Executive

Our [board](#), [team](#) and [advisory panel](#) are the drivers of our success, and there were a few changes to the membership during the 2022/23 year. We saw the departure of two directors from board, as well as the arrival of three new directors after a successful round of recruitment. We also said goodbye to two members of our team, both of whom are now working for organisations in our professional network. We continued to develop the membership of our advisory panel to reflect the breadth of stakeholder groups that we work with.

Our business plan for the 2022/23 year focused on reviewing and adapting internal processes, and proactively seeking collaboration with partners to better understand how we could help them with the implementation of the Environment Act 2021.

We reviewed how our service level agreements were working, undertook a language review to inform our communications with our stakeholders, and set out a position on how we could move to an [open data](#) business model in response to growing demand for our data holdings to be published.

We set up a series of [pilot projects](#) to develop a practical understanding of how we could help with the development of a local nature recovery strategy for London and the implementation of biodiversity net gain.

We continued to bring new organisations and people into our [professional and community networks](#), and sought further feedback from clients on our data search service. We started the process of making changes to the content and format to make the reports more useful based on this feedback, and began planning more changes to support the design and delivery of biodiversity net gain. There was a slight increase in the percentage of planning applications that were informed by a [GiGL data search](#) compared to the previous year (from 1.50% to 1.51%), although there was a slight drop in uptake of the service due to a decrease in the number of planning applications overall.

We collaborated on several projects with our colleagues in the UK-wide network of local environmental records centres and national schemes and societies, and attended various conferences and training sessions to inform our ongoing development including those organised by the Association of Local Environmental Records Centres (ALERC), the National Biodiversity Network Trust (NBNT), and the National Forum for Biological Recording (NFBR).

Another busy year!



CEO Overview of the Year

Our Vision and Mission
GiGL by Numbers
Community Networks

Professional Networks

Project Networks
Data Stewardship
Biodiversity Net Gain

Communications
Acknowledgements
Financial Summary
Working with Us



Our Vision and Mission

GiGL Vision

London's natural environment is appreciated, understood, considered and improved.



GiGL Mission

Greenspace Information for Greater London CIC (GiGL) is the capital's environmental records centre.

GiGL mobilises, curates and shares access to data that underpin our knowledge of London's natural environment, in order to enable our stakeholders to make informed decisions in policy and practice.

We aim to raise awareness of the benefits the natural environment provides to the capital and to ensure the protection and enhancement of London's natural environment are at the heart of the services GiGL provide.

Our Services

Data Stewardship

We are data custodians. We digitise records, ensure their high quality and safe storage, and make them available for active use. We also provide mapping tools and tools for data collection; survey forms, recording spreadsheets and more.



Advice and Consultancy

We provide expert advice, signposting and advocacy as well as partnership and collaborative working. We help identify and demonstrate priorities for public policy and aid policy compliance; as well as providing a wide range of training, mentoring and academic support for our community.



Data and Insight

We use data to uncover the truth about the world around us. From quantitative facts about recorded wildlife and green infrastructure, to audits of available data, to gap analysis and green infrastructure modelling, statistics and analysis.



Visualisation

Charts, graphics, maps and infographics. Our visual tools are used by consultants, partners, the media and the arts for any number of purposes. Map data or tell a bigger story with visualisations and infographics.



CEO Overview of the Year
Our Vision and Mission
GiGL by Numbers
Community Networks

Professional Networks
Project Networks
Data Stewardship
Biodiversity Net Gain

Communications
Acknowledgements
Financial Summary
Working with Us



GiGL by Numbers

Species

142 new taxa recorded
including

84 new species:

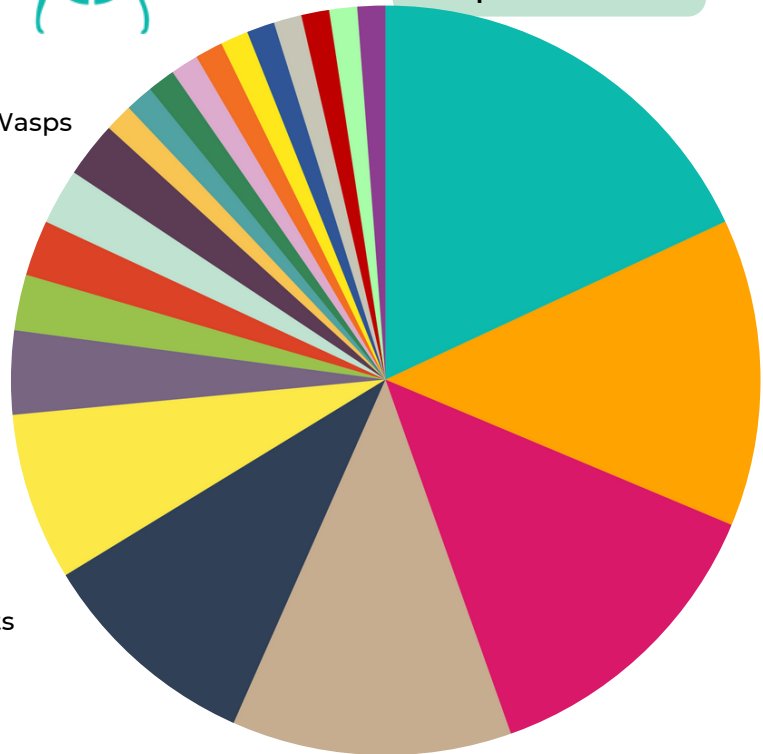


137 surveys uploaded
containing

188459
species records



- 15 ■ Invertebrates - Moths
- 11 ■ Higher Plants - Flowering Plants
- 11 ■ Invertebrates - True Bugs
- 10 ■ Invertebrates - Ants, Bees, Sawflies & Wasps
- 8 ■ Fungi
- 6 ■ Invertebrates - True Flies
- 3 ■ Lower Plants - Mosses
- 2 ■ Invertebrates - Beetles
- 2 ■ Invertebrates - Millipedes
- 2 ■ Invertebrates - Ticks & Mites
- 2 ■ Slime Moulds
- 1 ■ Fish - Bony
- 1 ■ Higher Plants - Conifers
- 1 ■ Invertebrates - Butterflies
- 1 ■ Invertebrates - Centipedes
- 1 ■ Invertebrates - Crustaceans
- 1 ■ Invertebrates - False Scorpions
- 1 ■ Invertebrates - Flatworms
- 1 ■ Invertebrates - Grasshoppers & Crickets
- 1 ■ Invertebrates - Praying Mantises
- 1 ■ Lichens
- 1 ■ Mammals - Terrestrial (bats)



Sites

45 new Sites of
Importance for Nature
Conservation (SINCs) added



162

SINCs updated

Proposed SINCs

(sites that have entered public consultation)

98 added



33 updated

3
removed



173

Metropolitan Open
Land sites updated

113

Greenbelt sites updated

Communications

1236

GiGLer
newsletter subscribers

↑
12.3%



3330

Twitter followers

↑
1.3%

387

LinkedIn followers

↑
46.3%



163

Instagram
followers

594

Facebook followers

↑
17.2%

CEO Overview of the Year
Our Vision and Mission
GiGL by Numbers
Community Networks

Professional Networks
Project Networks
Data Stewardship
Biodiversity Net Gain

Communications
Acknowledgements
Financial Summary
Working with Us



Community Networks

To GiGL, Community means the network of individuals and organisations that make up the complex and complicated world of environmental data generation and use, both in Greater London and nationally. Our community spans the ad-hoc Saturday species recorder, the organised Friends Of group and national recording schemes. It is the beginner and the expert; volunteer and professional; student, researcher and interested individual. What links all of them is the passion that they bring to their interactions with the natural world.

GiGL would not be the organisation it is without the dedication and enthusiasm of our community. We are proud to provide [specialist services](#) for free for many within the community network, part of our commitment as a social enterprise. There are more details on the data sharing partners we have in our community network on our [website](#).

If you have records you would like to share or would like more details on how GiGL can help you or your organisation then please [get in touch](#).



— Practical Assistance

GiGL were proud to be part of the nationally important [Decide Project](#). In the summer of 2022, we were able to provide moth traps to community groups as part of the project's drive to increase recording of moths in [under-recorded areas](#). This was really popular and is something that GiGL is keen to continue in future years.



Feathered gothic
(*Tholera decimalis*)

“The moth traps have been amazing, they're easy to use and very effective. We've been able to put them anywhere on Warren Farm Nature Reserve to get a better picture of the species across the site. It has enabled us to record several species, even at off-peak times of the year. One of the best species we've recorded so far is a Feathered Gothic, which is scarce for the area. It was brilliant to see a diversity of people attend the moth trapping event which I ran, even on a chilly night. They are a valuable community science resource, great for beginners, and great for increasing public awareness of the importance of moths and insects. We love using these moth traps!”



— Rowan Watkins (aged 14), Young Naturalist, Warren Farm Nature Reserve



Information is available for anyone wishing to learn how to use a moth trap. We also have an [Introduction to Biological Recording](#) training session on our YouTube channel, suitable for individuals or groups who would like to get involved and learn more about species recording in their local space.

— Improved Data Sources



The ongoing work to upload the full backlog of iRecord records for Greater London was finally completed in the 2022/23 year. This process was started in 2020 so it has been a lengthy journey to get to this point. We can now use these records in our Data, Information and Answer services. Implementing an ongoing iRecord update into the species database means we can advise groups to utilise the iRecord platform, knowing that their species records will make their way to us.



In early 2023 we added the [Amphibian & Reptile Conservation Trust](#) to the list of organisations which we have signed a Data Sharing Agreement.

This two-way agreement will allow GiGL to provide better data, information and answers on amphibians and reptiles in Greater London.

Number of iRecord records downloaded by taxon group	
Invertebrates	480233
Plants	68876
Birds	41960
Mammals	23642
Fungi	2680
Amphibians	877
Reptiles	312
Fish	96

CEO Overview of the Year
Our Vision and Mission
GiGL by Numbers
Community Networks

Professional Networks
Project Networks
Data Stewardship
Biodiversity Net Gain

Communications
Acknowledgements
Financial Summary
Working with Us



—○ Students

Year on year GiGL have helped to assist an increasing number of [students and researchers](#) in their work. In the 2022/23 financial year, 34 requests were completed, up 70% from the previous year, the majority of which originated from London-based institutions.

As the table shows, students across all disciplines are turning to environmental data to investigate social as well as ecological enquiries. The majority of requests comprise bespoke data extracts and maps; the Species, Open Spaces and Areas of Deficiency in Access to Public Open Spaces datasets were the most frequently requested to answer a range of questions.

Course	Requests
Conservation	7
Environment Sciences	5
Spatial Planning	5
Architecture	4
Social Sciences	3
Public Health	3
Geography	2
Environmental Consultancy	1
Natural Sciences	1
Climate Sciences	1
Data Science	1
Science Communication	1



“ How does greenspace accessibility vary with race and wealth across London ”

“ How should species be prioritised for reintroduction to urban conservation sites ”



“ What are the social implications of Biodiversity Net Gain policy ”



This year, the GiGL Team was also asked for our expert opinion on [how environmental data can and should be used in urban planning](#) for an article published in the Imperial College science magazine.

—○ London Recorders' Day



October 2022 brought us another exciting London Recorders' Day, the annual event to celebrate nature, naturalists and natural history in London. We gathered once again at the Natural History Museum for brilliant talks and posters from groups and individuals across London. Talks included Penny Metal's inspiring dive into the invertebrates of Warwick Gardens and sharing of her [beautiful macro photography](#), Edward Mayer's call to arms to [protect swifts and their nesting sites in London](#), and Elliot Newton showcasing the impressive monitoring and rewilding work occurring at [Citizen Zoo's Tolworth Court Farm](#). To read more about the 2022 event, click [here](#) or, better yet, watch the talks [here](#).

It was the final year of collaboration with our wonderful partners from the BioLinks Project (Field Studies Council) and the Angela Marmont Centre (Natural History Museum). GiGL would like to sincerely thank both teams for their dedication and support since the event's inception. The legacy of London Recorders' Day will continue through the new London Day of Nature. Check out [our social media channels](#) or the [GiGL website](#) for London Day of Nature information and updates.

CEO Overview of the Year
Our Vision and Mission
GiGL by Numbers
Community Networks

Professional Networks
Project Networks
Data Stewardship
Biodiversity Net Gain

Communications
Acknowledgements
Financial Summary
Working with Us



—o Water Vole Recovery Programme

In February 2023, the [Water Vole Recovery Programme](#) was awarded funding from the Mayor of London's Rewild Fund. The project is an ongoing collaboration between GiGL, [ZSL](#), [PTES](#) and [LWT](#) and aims to establish the current health and status of water vole populations across Greater London, join up pre-existing conservation efforts and assess the feasibility of American mink removal through collaboration with national leader, the [Water Life Recovery Trust](#). By identifying where water vole populations remain, were previously found or are absent, sites can be added to the [National Water Vole Monitoring Programme](#) to be monitored into the future.

GiGL assisted by providing data expertise to guide the programme and analysed water vole and American mink records from the last five years. This analysis enabled the programme to identify gaps in knowledge across London which will be filled by working with local practitioners to ground-truth GiGL data, find new sources of information, and encourage members of the public to share their sightings of water vole and American mink.



American mink
(*Neovison vison*)



The partners contacted local groups and visited sites to ground truth data and give volunteers the chance to test their field sign identification skills, dispensed by PTES training sessions, connecting a valuable network of practitioners and volunteers. To collect causal records from members of the public, GiGL created a [recording webform](#) and [webpage](#), building on guidance provided by PTES and LWT.



Water vole
(*Arvicola amphibius*)

CEO Overview of the Year
Our Vision and Mission
GiGL by Numbers
Community Networks

Professional Networks
Project Networks
Data Stewardship
Biodiversity Net Gain

Communications
Acknowledgements
Financial Summary
Working with Us



Professional Networks

GiGL's professional networks comprise of our [partners](#) and [clients](#), along with other professional bodies and representatives across the UK with aligned goals and interests. They play a key role in the growth of GiGL as an organisation, sharing their professional insight and industry knowledge. The income generated through our service level agreements (SLA) and pay-as-you-use services enables us to invest in all the data stewardship work that underpins and improves our services, and allows us to work free of charge for our extensive community networks.

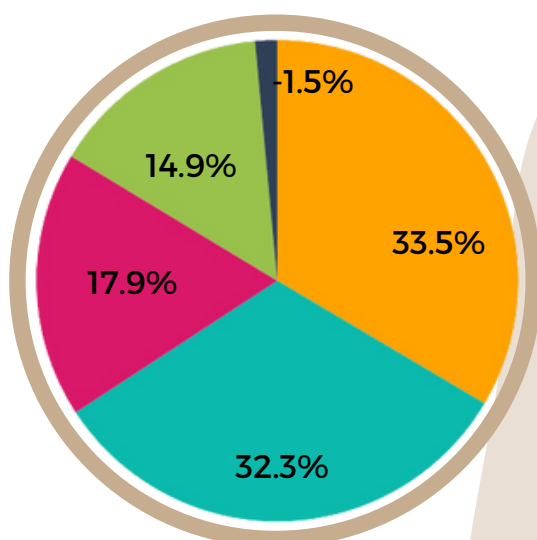
If you would like more details on becoming an SLA partner then please [get in touch](#).



Service Level Agreements

In the 2022/23 year we re-established our partnership with National Rail, taking our total number of partners to 37. Thames Water also signed up for a London-wide SLA where their previous agreement covered the Crane Catchment region only.

Our partners have access to robust information about London's natural environment as well as access to specialist services and our team's expertise. In March 2023, we analysed the diversity of SLA work we'd delivered through the year, as well as aligning our language around our service categories to allow for easier understanding of GiGL's full scope of resources. We delivered over 600 hours' worth of services to our partners and their contractors, split between the service categories below.



- Data stewardship** - collation of new data, curation of data in secure systems and quality assurance protocols.
- Data provision** - data exchange, bespoke extracts and provision of data and advice to contractors.
- Data interpretation** - data search reports, data analysis/statistics and bespoke modelling.
- Data visualisation** - creation of maps, webmaps and infographics.
- Advice and Consultancy** - advice, project management and training on use of GiGL data and products.
- Support and engagement** - creating bespoke recording forms, recording support and delivering presentations.

CEO Overview of the Year
Our Vision and Mission
GiGL by Numbers
Community Networks

Professional Networks
Project Networks
Data Stewardship
Biodiversity Net Gain

Communications
Acknowledgements
Financial Summary
Working with Us



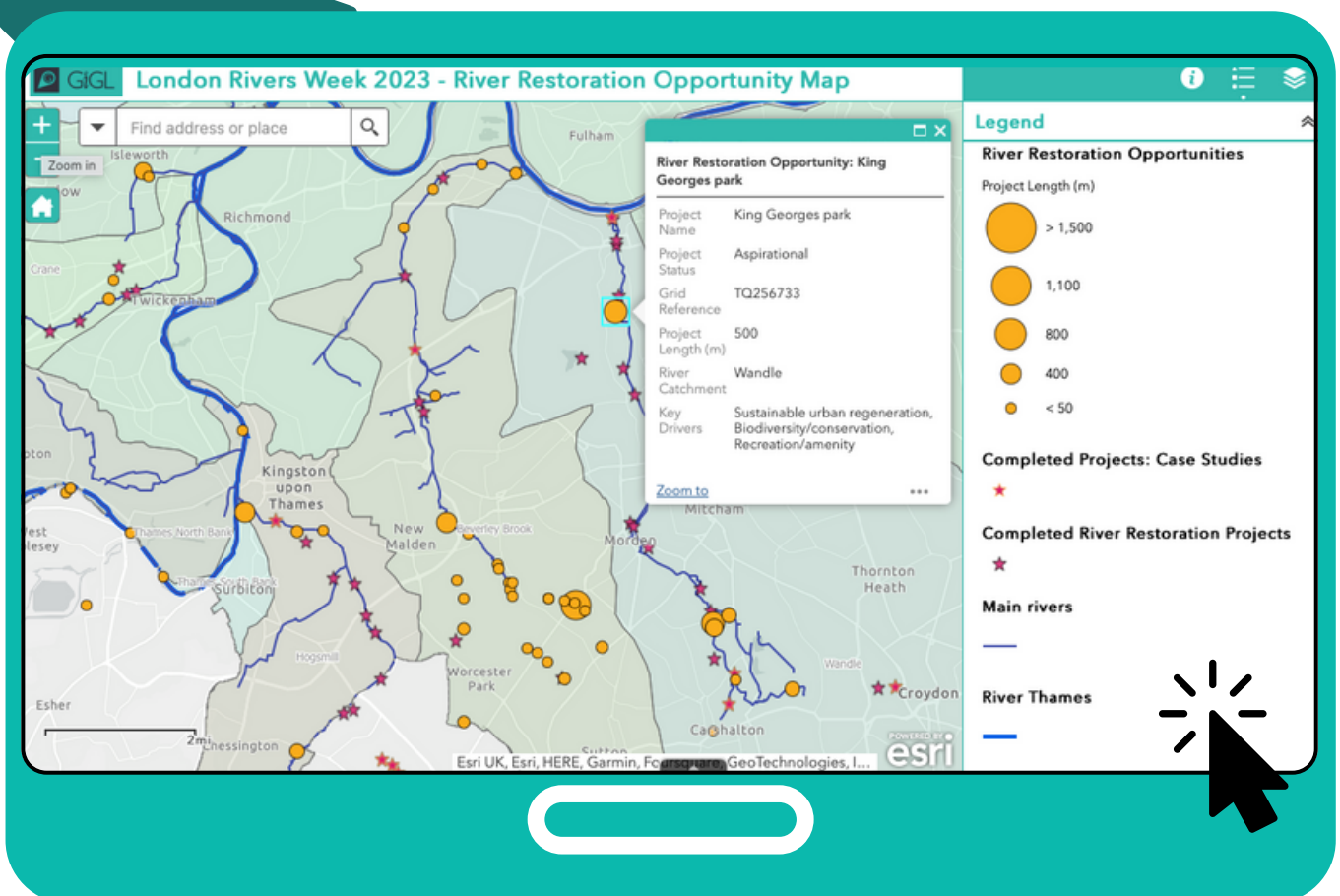
—o River Restoration Opportunities

In 2009, GiGL and the London Biodiversity Partnership undertook the first London wide mapping exercise to identify targets for river restoration and support the London Rivers Action plan. Since then, this opportunity map has assisted partnerships and collaboration, and flagged opportunities for further work. You can read more about the history of river restoration opportunity mapping in London [here](#).

GiGL, in partnership with the Environment Agency and Catchment Partnerships in London, built on this work to update the underlying data and launched it as an interactive online map as part of London Rivers Week (LRW) 2022 on the Thames 21 website. The map can be viewed [here](#).

In the 2022/23 financial year the opportunity map had nearly 5,000 views with an average of 80 views per day in July during LRW.

GiGL will continue to work with the EA and Catchment Partnerships in London to update and expand on the opportunity maps, and integrate this into wider planning policy in London such as local nature recovery strategies (LNRS) and biodiversity net gain (BNG).



CEO Overview of the Year
Our Vision and Mission
GiGL by Numbers
Community Networks

Professional Networks
Project Networks
Data Stewardship
Biodiversity Net Gain

Communications
Acknowledgements
Financial Summary
Working with Us



Project Networks

GiGL collaborates on many multi-partner projects, involving both professional and community network members who come together to share diverse passions and expertise with the ultimate goal of benefitting London's natural environment.



— Biodiversity Evidence - Better Outcomes from Planning Project

The “[Biodiversity Evidence – Better Outcomes from Planning](#)” (BE-BOP) project report was published in November 2022. This project was delivered by GiGL from October 2019 to September 2020 and was supported by the Mayor of London. The aim was to understand the challenges, limitations and needs of Local Planning Authorities (LPAs) in London with regard to taking account of biodiversity in planning, and to provide resources to help them overcome any barriers.

The report provides an overview of the project results and conclusions. It covers screening of planning applications for biodiversity in London's LPAs, the role of in-house ecologists, the challenges LPAs face, the role of GiGL and our recommendations for supporting London's LPAs based on our findings.



Recommendations for Better Outcomes for Biodiversity



*If in-house ecological expertise is not available

CEO Overview of the Year
Our Vision and Mission
GiGL by Numbers
Community Networks

Professional Networks
Project Networks
Data Stewardship
Biodiversity Net Gain

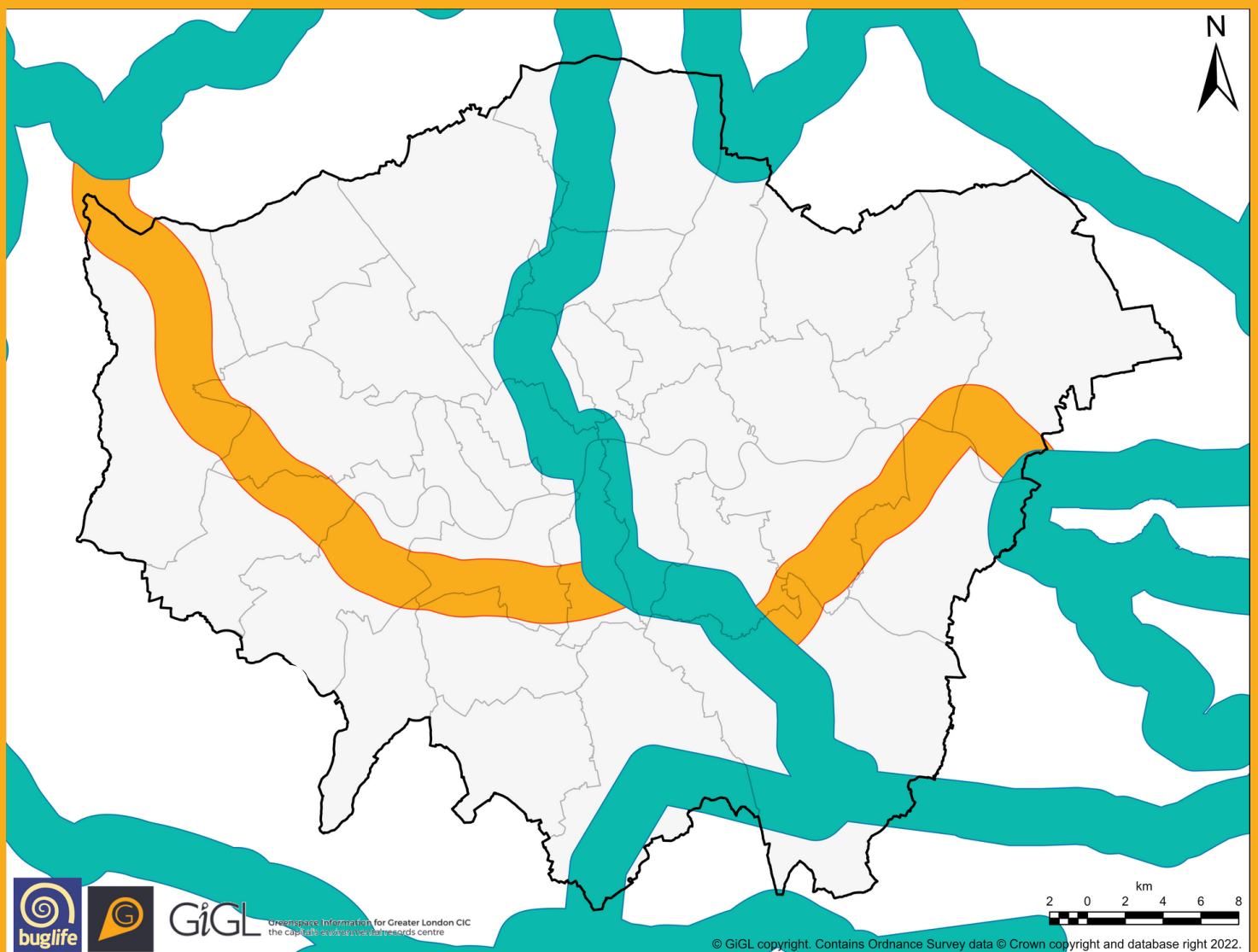
Communications
Acknowledgements
Financial Summary
Working with Us



—o B-Line

GiGL partnered with Buglife to create an East-West B-Line across Greater London. Using our comprehensive Habitats and Land Use (HLU) dataset, we modelled a B-Line that stretches from Hillingdon to Havering, connecting London's highest quality pollinator friendly habitats. The line aims to focus efforts of habitat creation and restoration along its length. For further information on the methodology and next steps, please see [here](#).

Large-headed resin bee
(*Heriades truncorum*)



■ New East to West B-Line ■ Previously established B-Line

CEO Overview of the Year
Our Vision and Mission
GiGL by Numbers
Community Networks

Professional Networks
Project Networks
Data Stewardship
Biodiversity Net Gain

Communications
Acknowledgements
Financial Summary
Working with Us



— Ancient Woodland Inventory Update Project

Phase 1 and 2 of the [Ancient Woodland Inventory \(AWI\) Update](#) project were completed in 2022/23 resulting in the identification of long-established woodland and wood pasture in Greater London, as well as the identification of potential errors within the current AWI dataset.

As we reached completion of the initial phases we prepared for Phase 3, a stage of further evidence gathering of each site's history. Phase 3 uses historic maps and GiGL held data (e.g. ancient woodland indicator species and previous woodland surveys) to extend the chronological time span of evidence for each long-established site to prove it's ancientness, or otherwise. We were very grateful to the five volunteers who we enlisted to help us with this (see [Acknowledgements](#) section).

In early 2023, as part of Phase 3, we also geared up for the implementation of a pan-London survey programme. This programme will enrich the inventory evidence-base with detailed modern ecological and archaeological data of selected sites. This survey programme has been made possible thanks to the London Urban Forest Partnership's (LUFP) successful bid for the Trees Call to Action Fund (TCAF). The fund was developed by Defra in partnership with the Forestry Commission and is being delivered by the Heritage Fund.

Surveyors look for signs of ancientness...

Archaeological features
e.g. earth banks

Indicator species
e.g. Native Bluebell

Tree Management
e.g. pollarding



To allow more time to source evidence for Phase 3, the predicted project finish date has been extended to March 2024.

CEO Overview of the Year
Our Vision and Mission
GiGL by Numbers
Community Networks

Professional Networks
Project Networks
Data Stewardship
Biodiversity Net Gain

Communications
Acknowledgements
Financial Summary
Working with Us



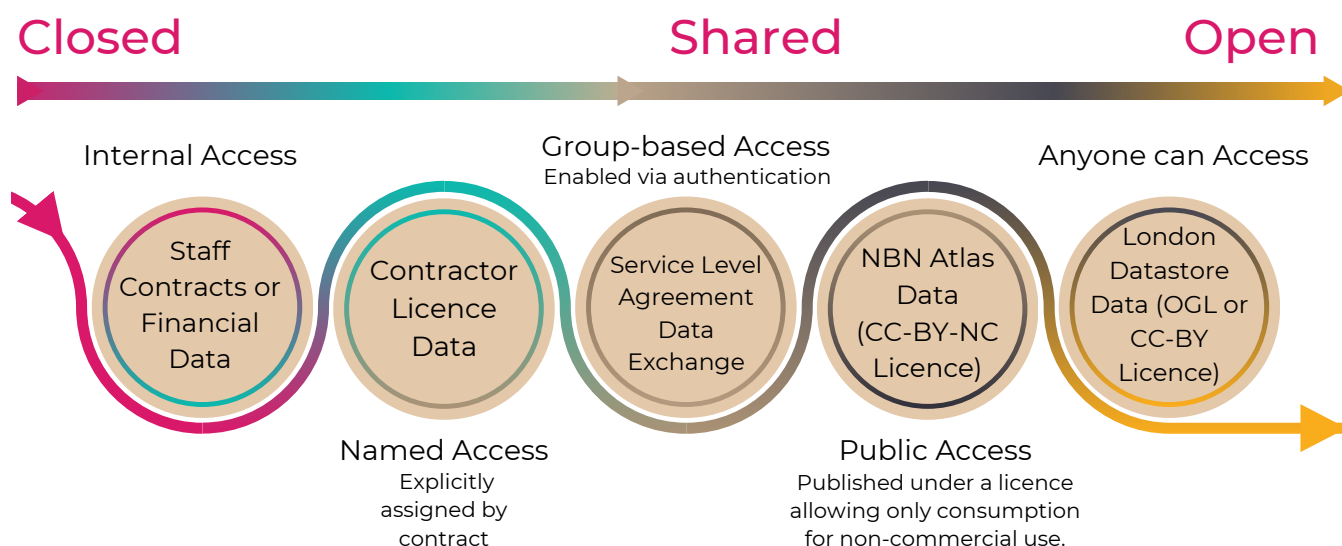
Data Stewardship

Open Data Review

In the autumn of 2022, GiGL carried out a review of our stance on open data and released a [GiGLer article](#) explaining our reasoning behind our shared data business model. Our approach of charging for services has allowed us to be independent and to sustainably cover our running costs for staff and business requirements. All profit is invested in our data stewardship work and our role as a community interest company and social enterprise. We do offer some open datasets and during the review we [collated a list of these as a resource for stakeholders](#), and we also advised on where other relevant data are supplied by other organisations as open source. Additionally, we outlined how we will continue to keep the open data issue in mind as we grow as a business.

GiGL's Data Spectrum:

Adapted from the Open Data Institute (ODI) Graphic



Data Sources, Systems and Tools

As well as the ongoing business as usual work that takes place to maintain GiGL's various datasets, in the 2022/23 financial year a number of improvements were made. For example, the information we hold for Metropolitan Open Land (MOL) and Green Belt was reviewed and updated to ensure they are as useful and accurate as possible, and alongside this a [new webpage](#) was created. Our open space access categories were also reviewed and refined, which means information on access to open spaces in London can be recorded in even greater detail.

In the 2022/23 financial year great strides were also made to update and promote GiGL's various documents and webpages that act as authoritative sources of information and standards. These include [biodiversity net gain](#) and [surveying guidance](#) for habitats, sites of importance for nature conservation, open spaces, species and general sites.

CEO Overview of the Year
Our Vision and Mission
GiGL by Numbers
Community Networks

Professional Networks
Project Networks
Data Stewardship
Biodiversity Net Gain

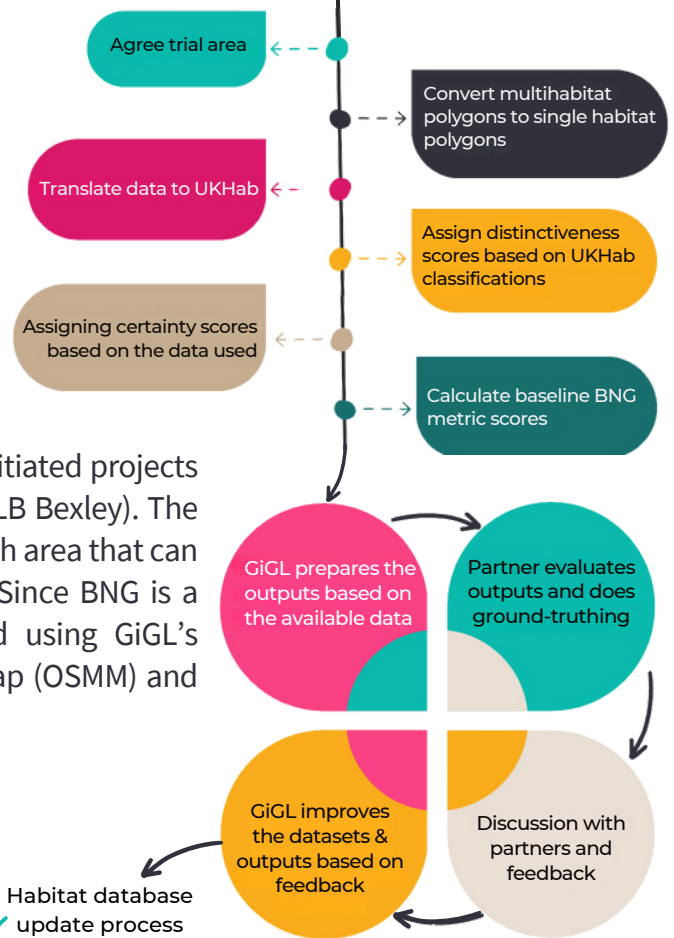
Communications
Acknowledgements
Financial Summary
Working with Us



Biodiversity Net Gain

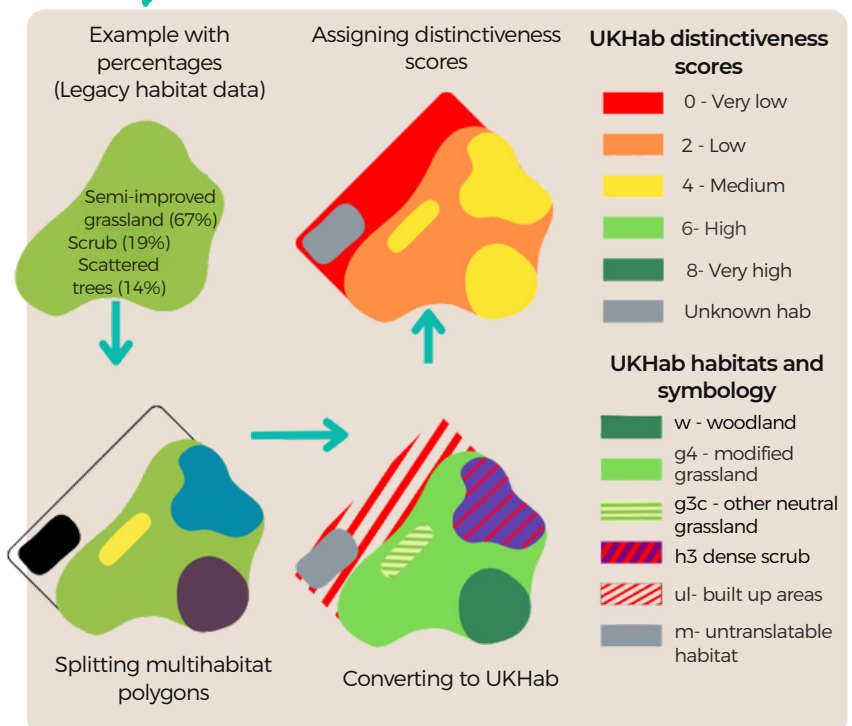
Pilot Projects

Under the [Environment Act 2021](#), from February 2024 all appropriate developments will have to deliver a minimum of 10% BNG using Defra's BNG metric. As part of our efforts to support our stakeholders with BNG requirements, we are working on a series of BNG pilot projects with 5 Service Level Agreement (SLA) partners. We started the work with Sutton's biodiversity team in summer 2022, and in February/March 2023 we initiated projects with 3 more LPAs (LB Southwark, LB Camden and LB Bexley). The aim of the project is to create a BNG baseline for each area that can be used as an indication of its biodiversity value. Since BNG is a habitat based approach, this baseline is created using GiGL's legacy habitat dataset, Ordnance Survey Master Map (OSMM) and where available more recent site survey data.



Habitat Database

BNG's Metric 4.0 is based largely upon the UKHab classification system. This is why in 2022/23 we began work on the conversion of our HLU data from Integrated Habitats System (IHS) into UKHab. As part of this project, we have been reassessing the translations that form the basis of the HLU dataset. Phase 1 consisted of reassessing the translation from Ordnance Survey Master Map into London Phase 1 (LonP1) and was completed in February 2023. Phase 2 continued for the rest of the financial year and consisted of reviewing the translation from LonP1 to IHS to UKHab. The project has so far been a great opportunity to strengthen our HLU data and get it ready for BNG.



CEO Overview of the Year
Our Vision and Mission
GiGL by Numbers
Community Networks

Professional Networks
Project Networks
Data Stewardship
Biodiversity Net Gain

Communications
Acknowledgements
Financial Summary
Working with Us



— Stakeholder Engagement

In 22/23 we continued discussions with our stakeholders about how we can support them with BNG requirements. In February 2023, we formed an advisory group with expert stakeholders to advise us on how we can best support our networks with improved and new GiGL services for BNG delivery. Their inputs have been invaluable for our work development and prioritisation.

BNG Advisory Panel Members:



Ecological consultants x3



LPA ecologist & LPA BNG officer



LPA planner



GLA and TfL

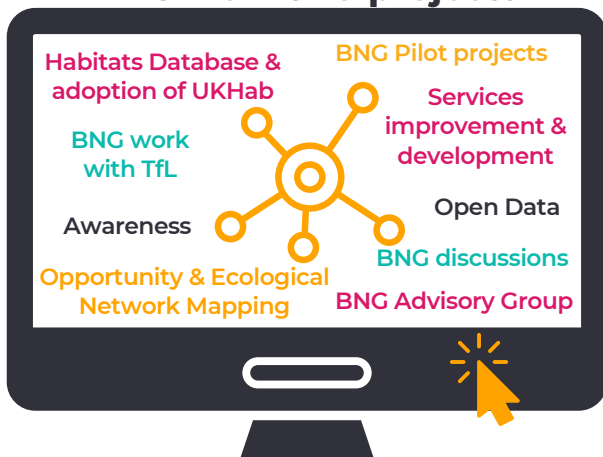


Natural England

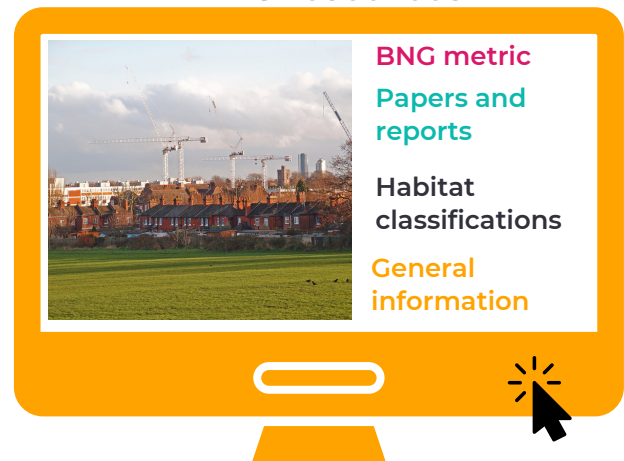
— Resources

In 2022/23 we also added new BNG pages to our website. If you'd like to learn more about our BNG work and our related projects you can visit our [BNG webpage](#). We have also prepared a compilation of [BNG resources](#) to help our stakeholders find the right information in one place. We have included documents for planners and boroughs, as well as key information documents about how BNG will be implemented.

BNG work and projects



BNG resources



CEO Overview of the Year
Our Vision and Mission
GiGL by Numbers
Community Networks

Professional Networks
Project Networks
Data Stewardship
Biodiversity Net Gain

Communications
Acknowledgements
Financial Summary
Working with Us



Communications

— DiscoverLondon

[DiscoverLondon](#), GiGL's online public mapping portal that has existing in a number of different forms since 2012, was re-launched in March 2023. This latest design overhaul simplified navigation and added a variety of new features to help the public dive into all of the information we're excited to share, from wildlife havens and hidden parks, to wildlife crime and river restoration. More information about DiscoverLondon's new features can be found in its launch [GiGLer article](#). An updated [user guide](#) is also available. We hope that this re-launch will help us reach new audiences and make it easier for everyone to connect with nature in their local area.



— Client Questionnaire

As part of our client service review, in August 2022 we started a detailed questionnaire survey on our client's data search report service. This ran alongside our now regular customer satisfaction survey which has been going out with every data search report eCountability delivers on our behalf since September 2021. This more detailed survey aimed to gather insights from our clients and improve our understanding of their requirements with the goal of improving and enhancing our service.

We asked our clients about our customer service, the content of the reports, the recent updates, their suggestions for improvements, data sharing and how we can improve communications with them. We received a lot of useful feedback and we are already working towards implementing some of their recommendations into an updated and refreshed data search report.



CEO Overview of the Year
Our Vision and Mission
GiGL by Numbers
Community Networks

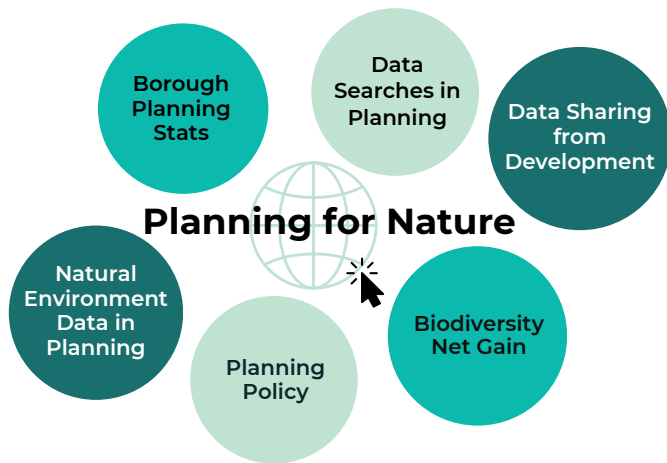
Professional Networks
Project Networks
Data Stewardship
Biodiversity Net Gain

Communications
Acknowledgements
Financial Summary
Working with Us



— Planning for Nature Webpages

In 2022/23, the 21st financial year of running the data search service, we worked on various resources to raise awareness of the reports and increase our stakeholder's understanding of the service. We updated our [Planning for Nature](#) webpage and added two new associated pages to the group; the [Natural Environment Data in Planning](#) page provides more information about the data search reports and the planning process, and includes a factsheet for Local Authorities, while the [Data Sharing from Development](#) page highlights the importance of the planning process contributing to the existing London-wide evidence base.

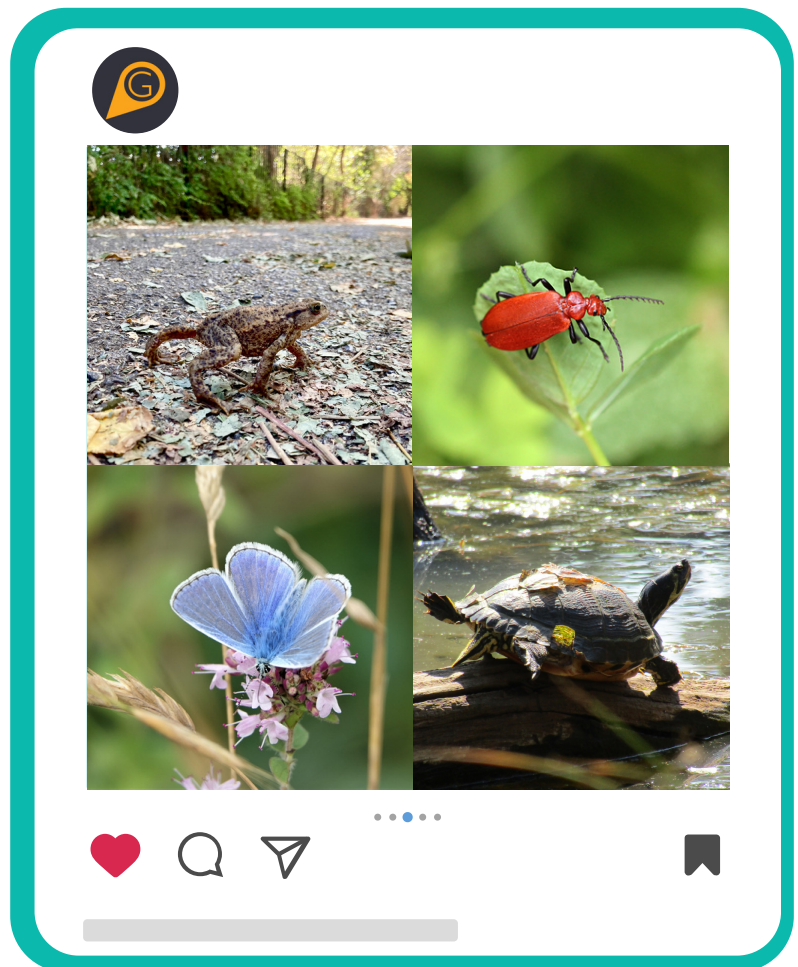


We also refreshed the way we provide the statistics on planning applications informed by a GiGL data search report. It was updated to an interactive format, with each set of figures in a separate layer and additional monthly information. These can be found in our [Data Searches and Planning](#) webpage, updated in May 2022, along with a GiGLer article: [\(Re-\)introducing GiGL's Data Search Reports](#) – giving nature a voice in the planning process.

— Social Media



A social media spruce up was on the cards for 2022, to enable us to foster further engagement with our community and tailor our communications to the different stakeholder audiences on each of our 3 platforms: [Twitter](#), [Facebook](#) and [LinkedIn](#). This paved the way for our latest social engagement tool - the [GiGL Instagram account](#), with the purpose of encouraging species recording and raising awareness of GiGL by sharing images of London's nature. The photos are sent to us via our [species recording form](#) or by our regular recorders (with permission to share), with the GiGL team also getting involved and posting their own images to showcase their love for wildlife!



CEO Overview of the Year
Our Vision and Mission
GiGL by Numbers
Community Networks

Professional Networks
Project Networks
Data Stewardship
Biodiversity Net Gain

Communications
Acknowledgements
Financial Summary
Working with Us



Acknowledgements

—o Volunteers

Volunteers have become an essential branch of GiGL's network, getting involved in diverse projects, ranging from tackling mountains of data to participating in large-scale online endeavours, such as the Zooniverse project.

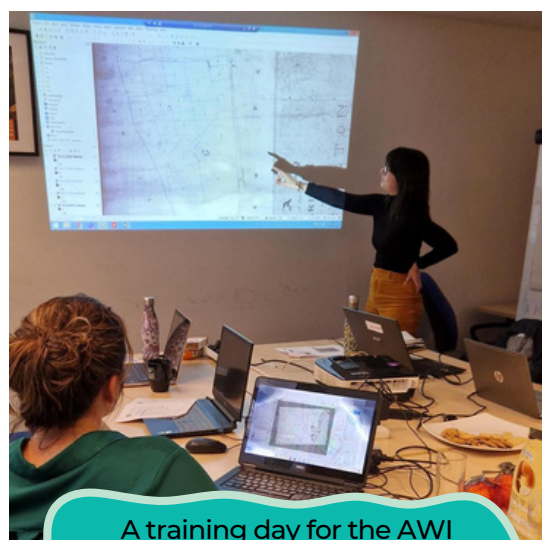
Recognising the significance of volunteer engagement, GiGL has taken strides in the past 2022/23 year to enhance the volunteering experience. Our Community and Volunteers Officer, Ben Town, alongside other GiGLers, has worked to revamp our volunteer offerings, renewing our focus on diversifying opportunities and providing a broader range of training options and tasks. The goal is to cater to various interests and skillsets, nurturing a community of volunteers who feel empowered to contribute meaningfully to conserving and protecting Greater London's rich biodiversity and natural heritage.

The [AWI Update project](#) provided an opportunity to trial these new offerings. With volunteers playing a vital role in sourcing historical maps and documents related to London's woodlands. Since September 2022, the AWI Update Volunteers have received multiple training sessions from members of the GiGL team, including the opportunity to train in the open source Geographic Information System (GIS) application QGIS, learning the basics of GIS data interpretation and processing along with more advanced techniques such as georeferencing. Volunteers have also just started with the Community Team helping with the important tasks of verifying species records and data entry.

Keep an eye on our [volunteering page](#) to see updates and opportunities.



Volunteer Pamela looking for library resources



A training day for the AWI volunteers

AWI Volunteers
Stacie Toovey
Stephen Bishop
Pamela Harling
Richard Young
Jeremy Nason

Find out more about them in their GiGLer article [here](#).

CEO Overview of the Year
Our Vision and Mission
GiGL by Numbers
Community Networks

Professional Networks
Project Networks
Data Stewardship
Biodiversity Net Gain

Communications
Acknowledgements
Financial Summary
Working with Us



GiGL would like to thank the following people and organisations for their contributions over the 2022/23 year:

GiGL Board:

- Suzie Jackman
- Amandeep Jethwa
- Mandy Rudd
- Jo Heisse
- Jon Riley
- Stacey Cougill
- Cam Witten
- Nick White

GiGL Advisory Panel:

- Alison Fure
- David Brown
- Elliot Newton
- Jeremy Matthews
- Laurie Baker
- Mark Spencer
- Naomi Pomfret
- Simon Saville
- Valerie Beirne
- Cath Patrick
- Ella Moseley
- Gwen Brassine
- John Archer
- Lizzie Botfield
- Paul Losse
- Sarah Knight
- Valerie Selby

AWI Update Advisory Group

- John Archer
- Mathew Frith
- Richard Pearce
- Jon Skoyles
- Charlotte Moss
- Lucy Beagley
- Orlando Methuen-Campbell
- Jenny Scholfield
- Becky Gibson

BNG Advisory Group

- Francis Castro
- John Luckhurst
- Jon Riley
- Marion Macnair
- Nick White
- Katherine Drayson
- Rosie Whicheloe
- Stacey Cougill
- Steve Whitbread

Data providers:

- Amphibian and Reptile Conservation
- Bat Conservation Trust
- Butterfly Conservation (Herts & Middlesex, Cambridgeshire and Essex, Surrey)
- Diocese of London
- Essex Field Club
- Kent Reptile and Amphibian Group
- LivingRoofs.org
- London Amphibian and Reptile Group
- London Bat Group
- London Fungi Group
- London Geodiversity Partnership
- London Natural History Society (sections)
- People's Trust for Endangered Species
- Woodlands Farm Trust
- Zoological Society for London (Estuaries & Wetlands section)

Our Community networks:

- Friends of Groups
- Community Groups
- Members of the public
- Students
- Researchers
- Our community of recorders and verifiers
- Local, regional & national organisations with whom we share data (more info on the webpage: GiGL Partners - GiGL)
- Project partners

Professional bodies:

- Association of Local Environmental Records Centres
- National Biodiversity Network

Partners:

- Affinity Water
- City of London
- City of Westminster
- Environment Agency
- Greater London Authority
- Lee Valley Regional Park Authority
- London Borough of Barking and Dagenham
- London Borough of Barnet
- London Borough of Bexley
- London Borough of Bromley
- London Borough of Camden
- London Borough of Ealing
- London Borough of Hackney
- London Borough of Hammersmith and Fulham
- London Borough of Haringey
- London Borough of Harrow
- London Borough of Havering
- London Borough of Hounslow
- London Borough of Islington
- London Borough of Lambeth
- London Borough of Lewisham
- London Borough of Merton
- London Borough of Newham
- London Borough of Redbridge
- London Borough of Richmond
- London Borough of Southwark
- London Borough of Sutton
- London Borough of Tower Hamlets
- London Borough of Wandsworth
- London Wildlife Trust
- Network Rail
- Royal Borough of Greenwich
- Royal Borough of Kensington and Chelsea
- Royal Borough of Kingston upon Thames
- Thames Water
- The Royal Parks
- Transport for London (incl. London Underground & Metronet)

CEO Overview of the Year
Our Vision and Mission
GiGL by Numbers
Community Networks

Professional Networks
Project Networks
Data Stewardship
Biodiversity Net Gain

Communications
Acknowledgements
Financial Summary
Working with Us



Financial Summary

	22/23	21/22
TURNOVER		
Service Level Agreements	212,115	188,133
Pay as you use services	290,728	318,892
Grants	18,407	24,658
TOTAL TURNOVER	521,250	531,683
EXPENDITURE		
<i>Employment Costs</i>		
Salaries, pensions, recruitment, training, travel	491,876	430,371
Hosting (office, HR and finance support)	75,232	69,020
<i>Systems and kit</i>		
Hardware, software, website, IT support and depreciation	15,666	18,829
<i>Other</i>		
includes legal fees, business advice, subscriptions, insurance and accountancy	20,344	25,842
TOTAL EXPENDITURE	603,118	544,062
OPERATING DEFICIT	-81,868	-12,379
DEFICIT BEFORE TAXATION	-81,868	-12,379
Tax on Deficit		
includes corporation tax charge and deferred taxation	15,627	1,987
DEFICIT FOR THE FINANCIAL YEAR	-66,241	-10,392

CEO Overview of the Year
Our Vision and Mission
GiGL by Numbers
Community Networks

Professional Networks
Project Networks
Data Stewardship
Biodiversity Net Gain

Communications
Acknowledgements
Financial Summary
Working with Us



Working with Us

GiGL Partners



If you feel that your organisation would benefit from becoming a partner, gaining regular access to reliable and up-to-date information about London's natural environment and GiGL's services and expertise, please contact the team for an initial discussion of your needs and to arrange a demonstration of our products and services, or for more information go to <https://www.gigl.org.uk/contact/>

Clients



We also provide services to clients, including environmental consultants, developers and potential partners. For more information go to <https://www.gigl.org.uk/working-with-us/clients/>

The Public



We actively encourage Londoners to tell us about the wildlife they have seen in the city via our online form and to collaborate with our partners that run campaigns to learn more about particular species, habitats and open spaces. For more information go to <https://www.gigl.org.uk/working-with-us/the-public/>

Recorders and Recording Groups



We provide a range of services to support London's recording experts, from gap analysis and mobilising data through to data validation, analysis and visualisation. For more information go to <https://www.gigl.org.uk/how-gigl-can-help/>



GiGL Office

c/o London Wildlife Trust,
Fivefields,
8-10 Grosvenor Gardens,
Victoria,
SW1W 0DH



Online

Website: www.gigl.org.uk
Newsletter: www.gigl.org.uk/gigler



Twitter



Facebook



LinkedIn



Instagram

GiGL Registered Office

Greenspace Information for Greater London CIC, 10 Queen Street Place, London EC4R 1BE, community interest company limited by guarantee registered in England and Wales number 8345552

Photo credits: Front cover: Penny Metal, Charles Schmitt, Jason Gallier, Warren Farm NR, Russ Garrett, Craig Jones; p3: Guy Johnson; p4: Penny metal, Jason Gallier; p5: Gavin Kingcombe; p6: antoinekita, Warren Farm NR; p7: Penny Metal, Piotr Szczypa; p8: Kevin Nolan, Craig Jones; p12: Penny Metal; p13: Charles Schmitt; p16: Russ Garrett; p18: Rebecca Harvey, Penny Metal, Julian Allen, Amy Palmer-Newton.

