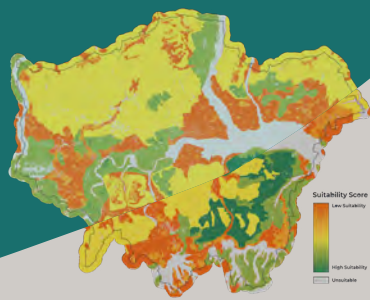


Greenspace Information  
for Greater London CIC

# Annual Report 2024/25



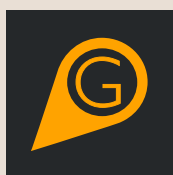
© Giuseppe Intriari



© Penny Metal



© Charles Schmidt



GiGL

Greenspace Information for Greater London CIC  
the capital's environmental records centre

# Contents

<b>Timeline highlights</b>	<b>3</b>
<b>GiGL by numbers</b>	<b>4</b>
<b>CEO overview</b>	<b>6</b>
<b>Community highlights</b>	<b>7</b>
<b>Partnership highlights</b>	<b>8</b>
<b>Achievement highlights</b>	<b>9</b>
• Our new strategy	9
• Championing Local Environmental Records Centres	9
• London Day of Nature 2024	10
<b>Collaboration in action</b>	<b>11</b>
• London's Local Nature Recovery Strategy	11
• The Great London Pond Project	12
• Wandsworth garden survey	13
<b>Evolving to better serve</b>	<b>14</b>
• Supporting Academic Research	14
• Modernising Data Delivery	15
• Habitat Suitability Mapping	15
<b>Acknowledgements</b>	<b>16</b>
<b>Financial summary</b>	<b>17</b>
<b>Working with us</b>	<b>18</b>



© Amy Palmer-Newton



© Paul Cass



© Giuseppe Inturri

# Timeline highlights

## April 2024

### Our new web services went live

GiGL modernised how environmental data is shared in early 2024 by launching new web mapping services for SLA partners, in partnership with Geosphere.



## October 2024

### Another successful London Day of Nature

On Saturday 26th October 2024, ecological enthusiasts from across London came together once more to celebrate nature in our capital.



## January 2025

### Pre-consultation for the London Local Nature Recovery Strategy

Working closely with the Greater London Authority, GiGL supported mapping, species work, workshops, data updates and the design of an interactive map that underpins this new spatial tool.



## March 2025

### Launch of GiGL's 2025-2027 Strategic Plan

We presented our vision, mission, and strategic goals for the next two years in our new plan. With community, services and our social enterprise at its heart.



## June 2024

### Wandsworth launched their 'On Your Street' garden survey

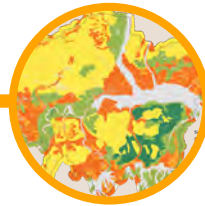
GiGL worked in close partnership with Enable Leisure & Culture and Wandsworth Council to unlock the biodiversity value of the borough's private gardens.



## November 2024

### Release of GiGL's Habitat Suitability Modelling

GiGL modelled the potential for restoring or creating ten priority habitats across Greater London using robust environmental evidence, including soils, geology, floodplains, land cover, water characteristics and indicator species.



## February 2025

### Publication of BNG in Practice report

GiGL played a proactive role in championing the value of local environmental records centres when consulted on this report from the Institute of Environmental Sciences and Association of Local Government Ecologists, where they presented over 20 recommendations for BNG to be truly effective.



# GiGL by numbers

## Species

	23/24	24/25
Number of records	584,587	315,227
Number of surveys uploaded	189	235
Number of new species	157	187

### Number of new species by taxon group

- 52 Fungi
- 25 Higher Plants – Flowering Plants
- 20 Invertebrates – Ants, Bees, Sawflies & Wasps
- 15 Invertebrates – Moths
- 15 Invertebrates – True Flies
- 10 Invertebrates – Beetles
- 10 Invertebrates – True Bugs
- 6 Invertebrates – Ticks & Mites
- 4 Invertebrates – Flatworms
- 4 Invertebrates – Spiders
- 3 Invertebrates – Molluscs
- 3 Lower Plants – Mosses
- 2 Birds
- 2 Fungoid
- 2 Invertebrates – Booklice
- 2 Reptiles
- 1 Diatoms
- 1 Fish – Bony
- 1 Higher Plants – Conifers
- 1 Invertebrates – Crustaceans
- 1 Invertebrates – Dragonflies & Damselflies
- 1 Invertebrates – Harvestmen
- 1 Invertebrates – Lice
- 1 Invertebrates – Mayflies
- 1 Invertebrates – Springtails
- 1 Lower Plants – Liverworts
- 1 Mammals – Terrestrial (excl. bats)
- 1 Slime Moulds



## Sites

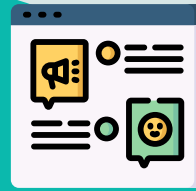
GiGL manages London's Sites of Importance for Nature Conservation (SINC) dataset.

SINCs are officially designated in Local Plans and we also keep records of proposed SINCs to show those under consideration or undergoing changes. Find out more [here](#).

	23/24	24/25
New sites added to SINC dataset	2	60
Existing SINCs updated	361	547
New sites added to proposed SINC dataset	60	132

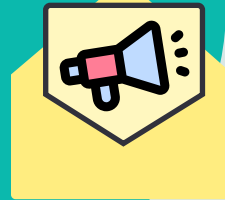
## Communications

Website visits  
**120,638** ↑ **36%**



GiGL Discover  
London portal visits  
**18,875**

Social media  
followers



GiGLer newsletter  
subscribers  
**1,299**

LinkedIn	689	↑	27.1%
Instagram	381	↑	42.7%
Facebook	695	↑	2.4%

## Collaboration and Services



**41**

Service Level Agreement  
Partners



**1,044**

Data Search Reports  
delivered to clients



**11**

Involvement in  
collaborative projects



**20**

Advocacy events and  
presentations delivered

# CEO overview

Mandy Rudd  
GiGL CEO



**The 2024/25 year was one of rapid change, collaboration and important learning for GiGL. We expected our work to be dominated by strategic and development management planning. With biodiversity net gain (BNG) becoming mandatory in February 2024, we anticipated a significant rise in demand for services designed to aid developers in following the mitigation hierarchy and using our data to create meaningful, evidence-based gains. We also anticipated increased engagement as the Greater London Authority's (GLA) London Plan guidance on implementing the Urban Greening Factor highlighted our data search service as a useful resource for informing the urban greening approach. Alongside this, we knew we had an ongoing role in supporting the GLA in progressing the development of London's Local Nature Recovery Strategy (LNRS).**

The year unfolded differently than predicted. Neither biodiversity net gain nor the urban greening factor resulted in a noticeable increase in the proportion of planning applications informed by our services. Our role in the LNRS process was also more extensive and intensive than anticipated. Even with additional team capacity and expertise, there were periods that felt like it was a case of 'all hands on deck', and those moments were some of the most exciting of the year.

What made this LNRS work remarkable was the commitment and expertise of my colleagues. The team rose to new challenges and found solutions at every stage, solving complex questions around data, including licencing, and how best to display them to ensure they make sense. We worked closely with the GLA team leading the process who we were very grateful they had involved us from the outset. They really valued the role we were able to play with our understanding of London as a region, the data that were available to them for the work via national platforms as well as our regional datasets, and providing LNRS-relevant analysis of them. It was particularly rewarding to involve our long-standing community and professional networks, including

species recorders from the London Natural History Society, whose knowledge and expertise helped shape the aims and objectives of the LNRS.

At a national level we helped write additional formal guidance for responsible authorities through the Association of Local Environmental Records Centres (ALERC), ensuring that requirements around open data recognised the realities of local environmental records centre data. Publishing our core datasets, which are our principal business assets and main focus of our ongoing investment of profits, without limitations, would undermine the sustainability of our social enterprise. It would also provide an advantage to our commercial competitors, with little to no benefit to our not-for-profit business or our stakeholders, including nature.

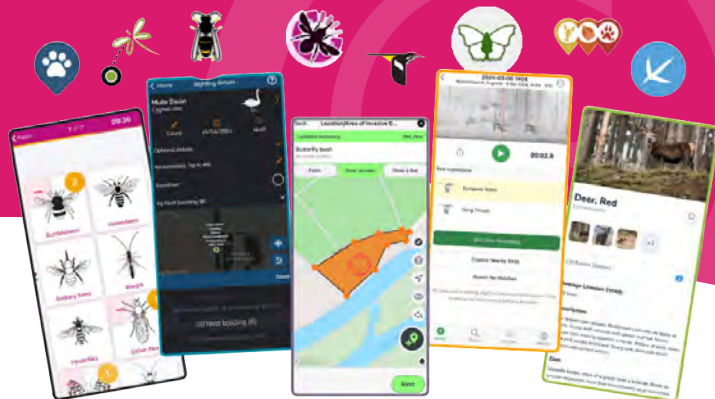
The 2024/25 year also saw us collaborate with Land Use Consultants and London Wildlife Trust on a project relating to London's Sites of Importance for Nature Conservation (SINCs). This included a review of the London Wildlife Sites Board and the selection process for identifying Sites of Importance for Nature Conservation, a refresh of London Wildlife Trust's 'Spaces Wild' document, and the creation of a new resource hub that will be managed and hosted by GiGL. We were also involved in an England-wide review of local wildlife site resources including guidance and data which was led by the Royal Society of Wildlife Trusts (RSWT), ensuring a link between the two projects.



You will see throughout this report how our team's expertise, collaboration, and our ongoing reinvestment into our core datasets have supported a wide range of projects. Each of these efforts strengthens London's evidence base and ensures that nature continues to be recognised, valued, and factored into decision making across the capital.

**Mandy Rudd, GiGL CEO**

# Community highlights



**GiGL expanded our Community Offering in 2024/2025, delivering more standardised and bespoke outputs to stakeholders across London, such as online recording forms for groups like WildChiswick and presenting to volunteers at Recording Workshops for example in collaboration with Cody Dock. The Community Team also reported comprehensively on how to get the most out of recording apps like iNaturalist and Merlin in a series of well-regarded GiGLer articles. As such apps become more popular, it is important for GiGL to promote high quality data standards and stay up-to-date on technological advances.**

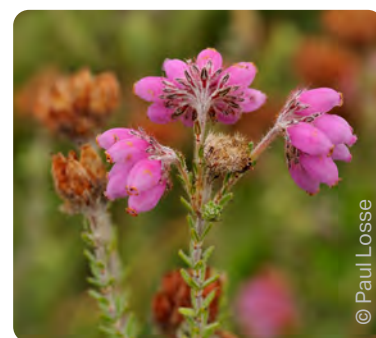
Positive feedback was received from Community Network members and GiGL Partners alike, particularly for highlighting data flow concerns with some apps and organisations and the importance of licencing records for commercial use so that GiGL and other LERCs can access them. Anecdotally, many iNaturalist users have changed their default record licence in response. The advice and resources derived from the article series also proved useful for iNaturalist-related projects like the annual City Nature Challenge and will continue to be utilised in years to come.

**[Read the GiGLer article series here.](#)**

The range of varied and popular recording apps that we detail in our GiGLer articles.

As set out in our Open Data Policy, we publish discovery datasets using open data licences that both improve consumers' understanding of London's natural environment and raise the profile of our services. As part of this commitment and in collaboration with the London Natural History Society (LNHS) Plant Recorder, we published a LNHS historical flowering plant dataset on the NBN Atlas, containing nearly 22,000 records spanning from 1500 to 1924. The records are available at 10km resolution; suitable for research at a national scale. Anyone wishing to get a more in-depth understanding of our historical data holdings should get in touch.

Cross-leaved heath  
(*Erica tetralix*)



© Paul Losse



Vicky, GiGL's Senior Community Officer, interacting at an event.

# Partnership highlights

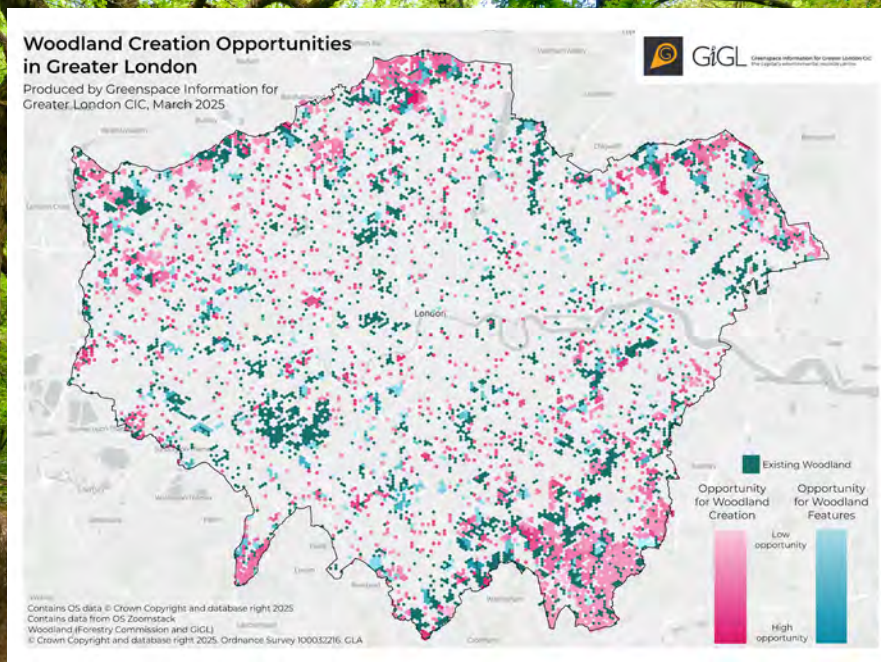
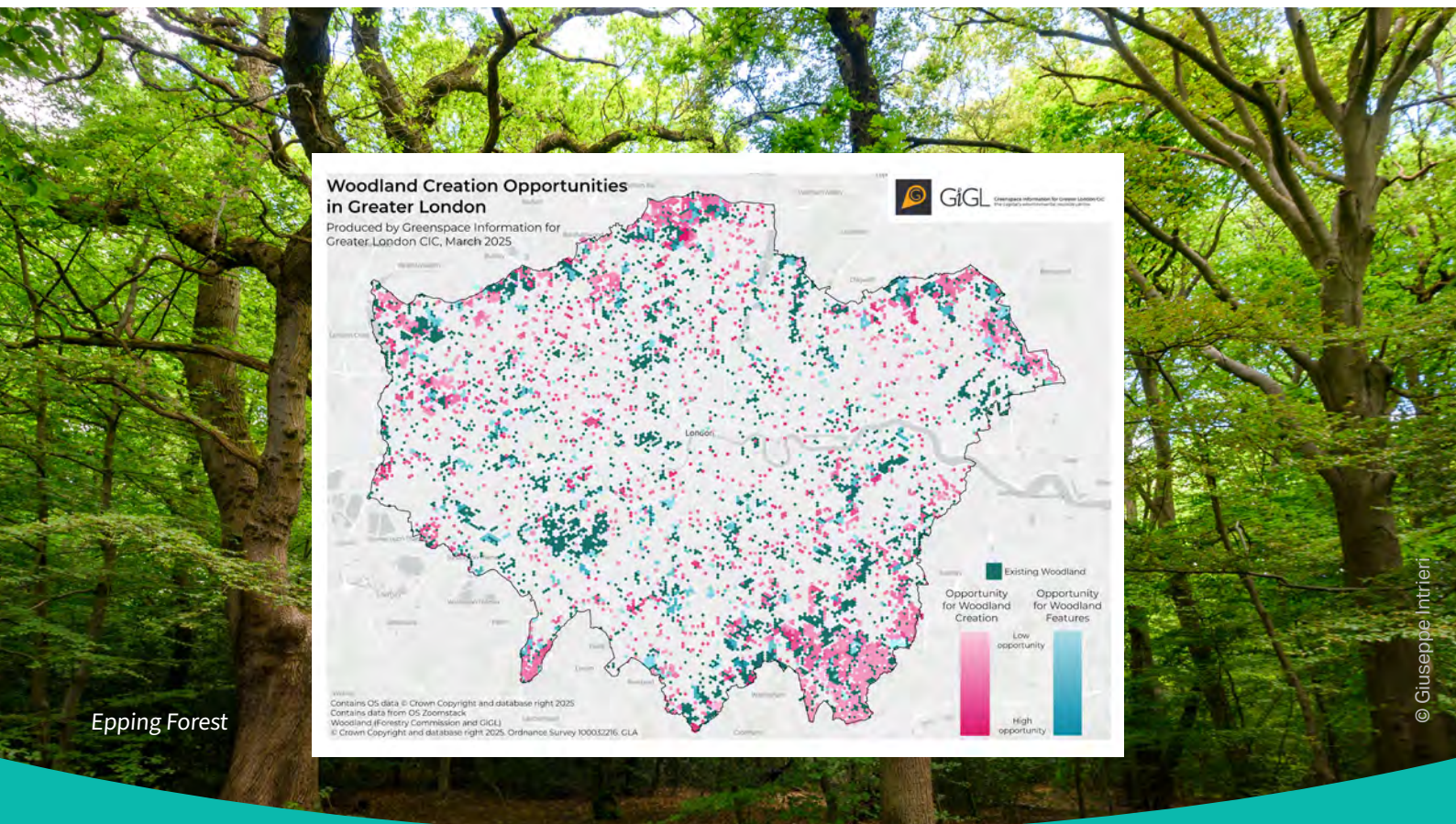


**In a year shaped by our involvement in preparations for the LNRS, our strong network of partner organisations proved more important than ever. Our long-established relationships with local authority officers placed GiGL in a unique position to verify designated site data quickly and successfully for use in the Local Habitat Map. We extend our thanks to all our contacts for their assistance and continued support.**

We supported our Local Authority partners with a wide range of projects, from producing species summaries and infographics for site management plans, to digitising hedgerow data, developing bespoke ecological network maps, and modelling the predicted impacts of changes to designated wildlife sites. It was hugely valuable to have dedicated time with individual partners. In October, we joined London Wildlife Trust for one of their staff days, offering guidance on how our data and services can

enhance their work, as well as providing staff with an overview of progress on our joint projects.

Our data and services also continued to play an important role at the regional level through our ongoing relationship with the Greater London Authority (GLA). We provided data for their internal use and for use by their consultants, supplied maps to support research and strategy development, and produced statistics to help answer questions raised by the London Assembly. This year also saw the development of the first version of our **Woodland Opportunity Mapping dataset**, created in collaboration with CPRE London and the GLA. The dataset identifies areas with the greatest potential for woodland creation, connection, and expansion, making it a valuable tool for strategic nature recovery. It is already being used within the LNRS and in CPRE London's Tree Ring project.



Epping Forest

A hex map of London showing existing woodland and opportunities for the creation of woodland or woodland features.

# Achievement highlights

Throughout 2024/25, GiGL hit a range of milestones, from strategic planning and policy influence to successful event delivery. We set out a strategic plan that would take us through the next two years, we helped ensure Local Environmental Records Centres were advocated for in policy and practice, and we delivered a sellout London Day of Nature event. The achievements we highlight in this section are just some that represent the range of work we deliver and stakeholders we support.

## Our new strategy

To begin the 2025 year, we were excited to announce the launch of GiGL's new strategic plan that would take us from 2025–2027. With community, services and

our social enterprise at its heart.

Our vision in this plan is a future where every decision affecting London's natural environment is informed by a robust evidence base and a genuine commitment to the wellbeing of people and nature. We reaffirmed our mission to collaborate with our community and professional networks to ensure we remain relevant and as helpful as possible via our services and systems.

We plan to continue to deliver social impact by investing in good data stewardship, delivering sustainable access to data, and supporting our stakeholders to make informed decisions in order to benefit Londoners and their surroundings.



## Championing Local Environmental Records Centres

This year, GiGL played a proactive role in championing the value of Local Environmental Records Centres (LERCs) in the context of Biodiversity Net Gain (BNG). Through meetings and interviews with external partners, we highlighted the value of LERCs and LERC data that led to the inclusion of relevant references in several influential publications.

These included the Good Parks for London report, where a section was dedicated to the BNG pilot projects we undertook with Local Authority partners. Here we were able to showcase how our collaboration helped us arrive at innovative solutions. Our collaborators also inputted and supported this piece:

*“The guidance we received from GiGL was invaluable. The project provided us with a comprehensive baseline of the various habitat types throughout the borough and their likely distinctiveness. This exercise has been instrumental in preparing us for BNG and improving our understanding of where biodiversity units could be allocated. We believe this work will enable the Council to monitor habitat improvements and changes over time. Furthermore, it will assist in identifying future areas for SINC reviews and developing effective strategies to enhance biodiversity in Kingston.”*

Elliot Newton, Biodiversity Officer at Royal, Borough of Kingston upon Thames

*continued next page*





Additionally, we also consulted on a report from the Institute of Environmental Sciences (IES) and Association of Local Government Ecologists (ALGE), **BNG in Practice: One year on from mandatory implementation**, where they presented over 20 recommendations for BNG to be truly effective.

This included mandatory data sharing with LERCs and support for them in creating comprehensive data services and 21st-century habitat monitoring systems.

This recognition reinforces the critical role that high-quality local data play in delivering effective biodiversity outcomes. For BNG to work, local data, appropriate ecological expertise, local communities, and collaboration must be at the heart of decision-making. Strengthening LERCs and ensuring standardised data sharing will be key to making this happen.

## London Day of Nature 2024

On Saturday 26th October 2024, ecological enthusiasts from across London came together once more to celebrate nature in our capital. Over 80 nature champions filled the venue at Camley Street Natural Park, bringing together seasoned practitioners and those just starting out, sharing insights from a blend of tried-and-tested approaches with creative experimentation in conservation and monitoring.



© Charles Schmidt

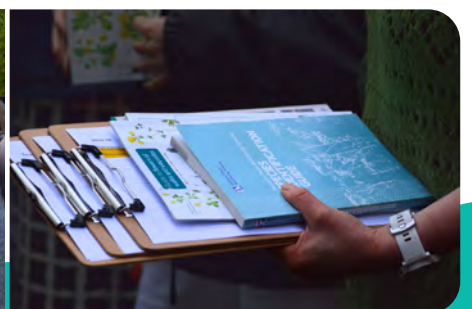
The day was shaped by themes ranging from setting London’s conservation agenda and embracing ecological complexity, to collaboration, education and upskilling. We heard recording tales from species enthusiasts and experts and looked ahead to concepts such as London’s emerging ‘Wildbelt’. Workshops explored biological recording basics, habitat mapping and planning tools for the community, with the final take away of the day from LDN coordinator, Vicky being: ***Think slow, act fast, and do it together.***

Collaborations persisted after the day of networking – attendee Giuseppe Intrieri sparked a social media and photography partnership

with GiGL to support our marketing and wrote an intriguing GiGLer article about his explorations and **how communities saved the woods in London.**

Thank you to everyone who attended, spoke, contributed posters, or supported the event. The day was a sell out and our most engaging yet.

Connect with the presentations and workshops that made the day memorable by **viewing the 2024 delegate pack** and share in the joy and curiosity they inspired by reading our GiGLer article series that recapped the day: **London Recap Part 1, London Recap Part 2**



# Collaboration in action



**Collaboration sits at the heart of GiGL's mission. During 2024/25, we worked closely with strategic authorities, delivery partners and communities to turn shared data into meaningful action for nature. From supporting the development of London's first Local Nature Recovery Strategy, to improving evidence for London's ponds and enabling borough residents to participate in data collection from their own gardens, these projects demonstrate the power of working together.**

## London's Local Nature Recovery Strategy

The 2024/25 year marked a pivotal year in the development of London's Local Nature Recovery Strategy (LNRS). Working closely with the Greater London Authority, GiGL supported mapping, species work, workshops, data updates and the design of an interactive map that underpins this new spatial tool.

The LNRS identifies where nature needs the most urgent attention, where recovery efforts can have the greatest impact, and how Londoners can play a role. Developed through collaboration with specialists, boroughs, community groups and locals, it is designed as a shared resource to guide land use, management and development across the capital.

GiGL supported the preparation of the Local Habitat Map, advising on data standards, mapping and modelling, and stewarding the evidence behind Areas of Particular Importance for Biodiversity (APIBs), Areas that Could Become of Particular Importance (ACBs), and proposed measures for nature recovery. We assembled and screened a wide range of ecological evidence, drawing on GiGL datasets, external sources and newly updated habitat suitability modelling, to ensure proposed recovery locations were realistic, evidence-led and spatially coherent.

We also led work on **LNRS species priorities**, coordinating London's taxon specialists to refine longlists and develop robust shortlists that balance conservation urgency with feasibility of action.

Alongside this strategic work, GiGL developed tools to support engagement and delivery, including interactive maps, London Online access for partners, and tailored pre-consultation support for boroughs.

**Together, this work has helped ensure London's LNRS is underpinned by a robust evidence base and is ready to guide coordinated action for nature recovery across the capital.**



© Becky Garden

# The Great London Pond Project

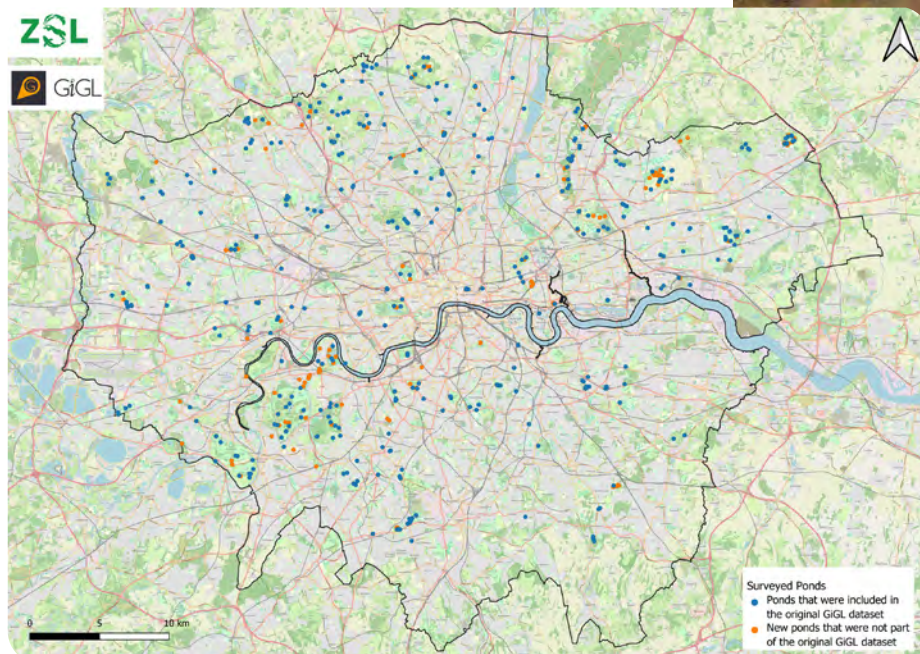
In 2024/25, GiGL played a key role in the Great London Pond Project, a partnership with the Zoological Society of London and Freshwater Habitats Trust, supported by the Mayor of London. The project aimed to halt the loss of London's ponds by building the first robust, up-to-date picture of their location and condition.

GiGL provided the baseline dataset of 2,745 potential pond locations across Greater London and worked with partners to ground-truth and improve this evidence through community science. With support from trained volunteers, over 1,100 sites were assessed, resulting in the confirmation of 418 existing ponds and the identification of 163 previously unmapped ponds. Crucially, the project identified 112 provisional priority ponds with high conservation potential.

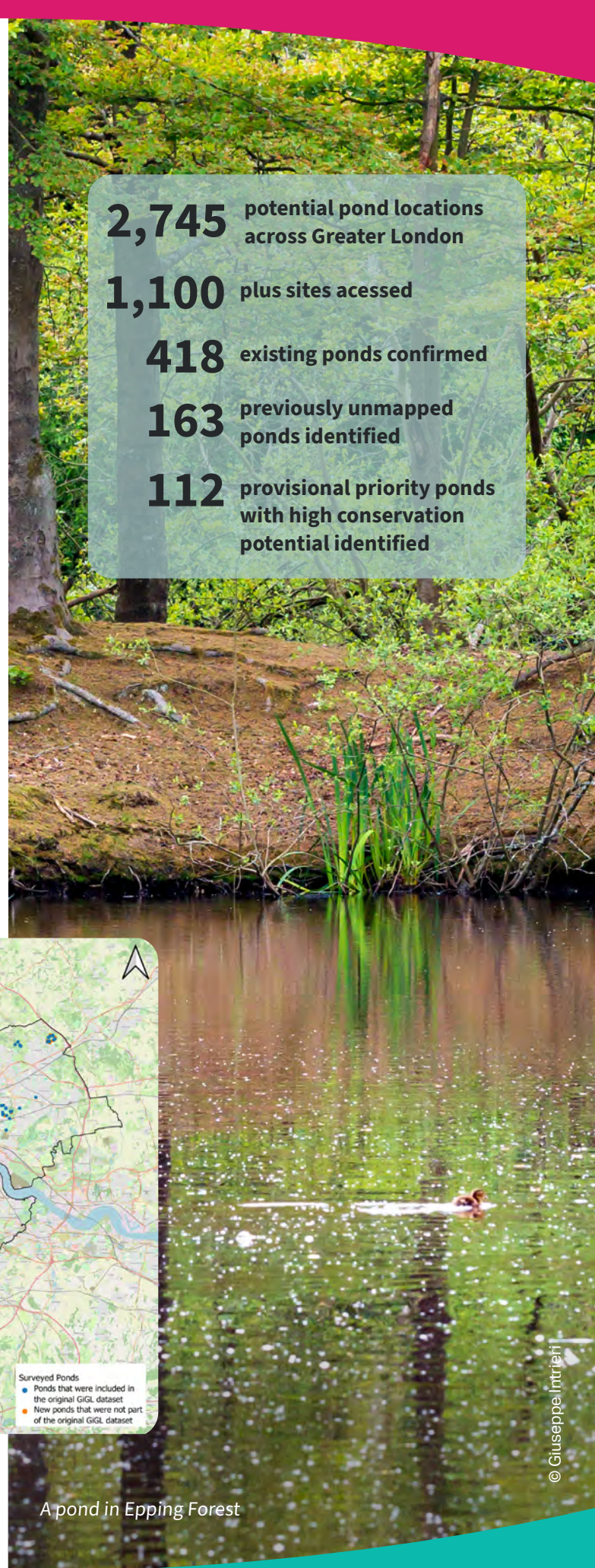
All verified and newly identified ponds are now incorporated into GiGL's London-wide Habitat and Land Use dataset, strengthening the evidence base that underpins ecological network mapping, BNG and London's LNRS.

[Read the full article](#) for detailed findings and maps.

- 2,745** potential pond locations across Greater London
- 1,100** plus sites accessed
- 418** existing ponds confirmed
- 163** previously unmapped ponds identified
- 112** provisional priority ponds with high conservation potential identified



Ponds surveyed as part of The Great London Pond Project.



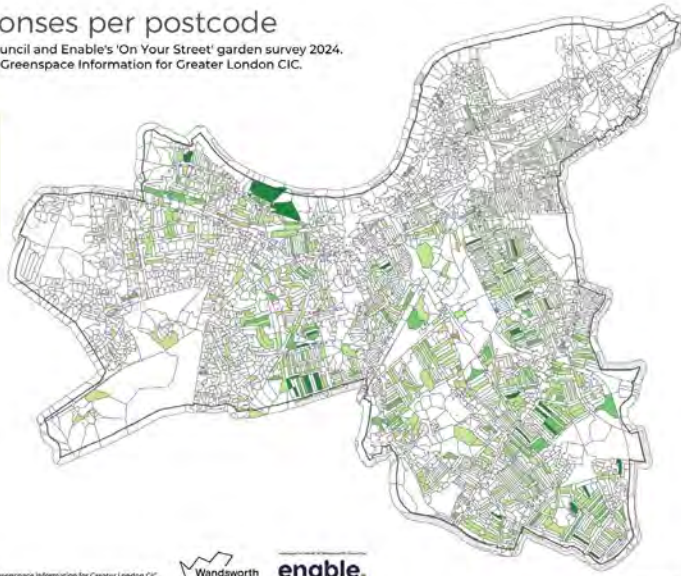
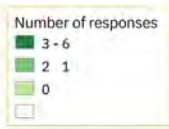
A pond in Epping Forest

© Giuseppe Intrieri

# Wandsworth garden survey

## Survey responses per postcode

Results of Wandsworth Council and Enable's 'On Your Street' garden survey 2024. Compiled and mapped by Greenspace Information for Greater London CIC.



The Borough of Wandsworth shaded in relation to the number of garden survey submissions each postcode received.



GiGL  
Greenspace Information for Greater London CIC  
The London Environment & Heritage Centre



enable  
The London Environment & Heritage Centre

Scale: 1:30,000 at A3

© Crown copyright. All rights reserved. Wandsworth Licence Number: AC00090302 (2024)

In late 2024, GiGL began a project in close partnership with Enable Leisure & Culture and Wandsworth Council to unlock the biodiversity value of the borough's private gardens - spaces that altogether make up nearly 20% of Wandsworth's land area. By designing, hosting and managing the 'On Your Street' garden survey, GiGL enabled residents to contribute meaningful data about wildlife and nature-friendly features in their gardens.

The survey, promoted through a borough-wide community engagement campaign, generated an impressive 782 responses, creating a rich new evidence base at street level. GiGL transformed this high-volume community science data into accessible insights through

analysis, static outputs and the creation of a publicly viewable interactive map. This tool allows users to explore patterns in habitat features, species sightings, and garden characteristics across the borough, supporting both public awareness and professional use.

Crucially, the project ensures that data from private gardens, which is often missing from other datasets, can now inform Wandsworth Council's Biodiversity Strategy, helping to identify opportunities to improve habitat connectivity and target action where it will have the greatest impact. To explore the interactive map and gain more detailed insight, read [read the full article here](#).



© Martin Sepion

A Red fox (*Vulpes vulpes*)

A word cloud GiGL produced to display the species that residents noted in their survey responses

# Evolving to better serve



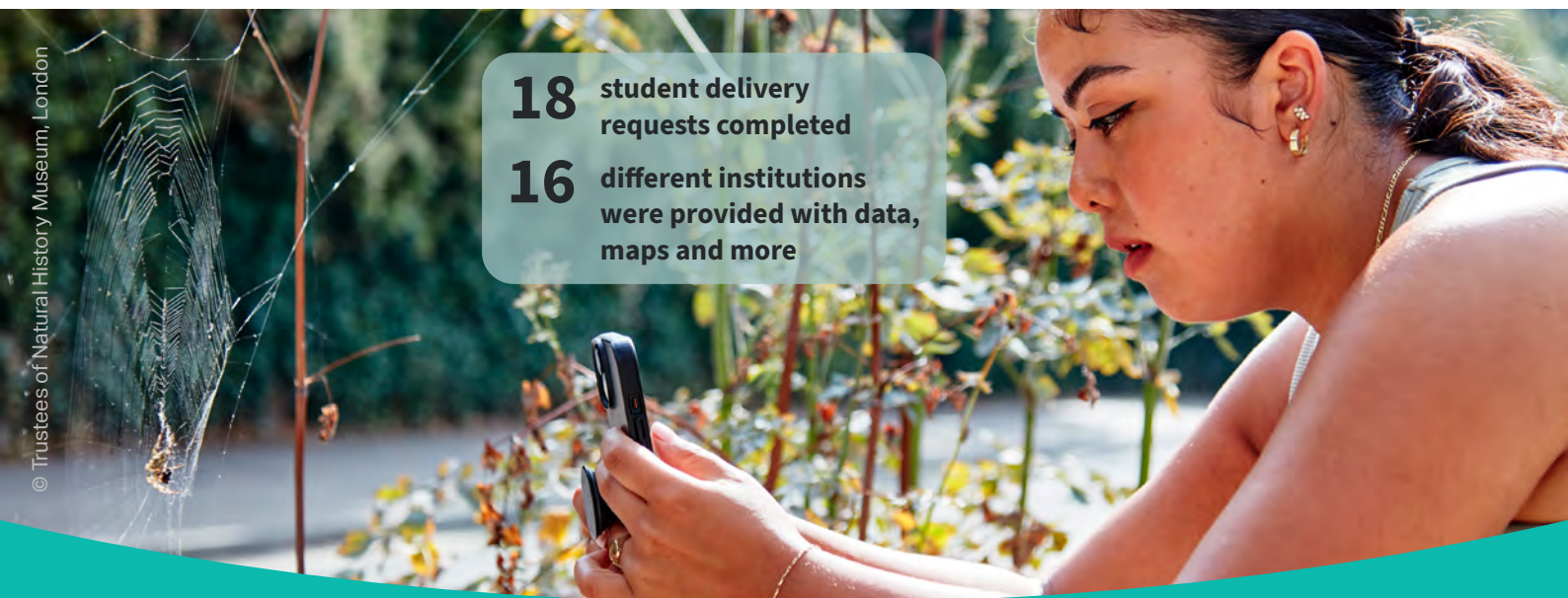
To remain a trusted and effective data mobiliser, GiGL continues to evolve how we support our partners, researchers and recording community. During 2024/25, we invested in modernising data delivery through new web services, expanding our analytical tools such as habitat suitability mapping, and developing clearer, more accessible services for academic research. These developments reflect our commitment to improving the accessibility, efficiency and impact of data.

## Supporting Academic Research

Throughout the financial year, academic institutions in London and beyond increasingly looked to GiGL to explore big questions in their research and equip their students with the intellectual frameworks and data to do the same. Building on work started last year, we put our new charging policy to use sharing data with institutions for projects such as the investigation of the ameliorative effects of nature on mental health during extreme heat events by researchers at Kings College London. Our ability to appropriately charge researchers for our services means that we can both share more data services for more uses, as well as facilitate researchers to financially support the data infrastructure upon which their research depends. As with the previous year's workshop at Goldsmiths University, GiGL were invited to present

two workshops to students at University College London and Kingston University. The workshops invited students to explore topics like barriers to data flow, land ownership and how to expand engagement with Citizen Science. Positive feedback from the tutors as well as follow-up data requests from some attending students makes it likely that these will be repeated in years to come.

The Team also completed 18 student delivery requests from 16 different institutions, delivering data, maps and more for projects investigating diverse themes from beavers, hazel dormice and water vole population restorations to biodiversity net gain, air pollution and open space access. The delivery of this free service is now shared between the team to maximise the completion of requests. Excitingly, we were also contacted by more schools, where staff and students were keen to highlight the importance of nature monitoring and begin empowering young Londoners with biological recording skills.



**18** student delivery requests completed

**16** different institutions were provided with data, maps and more

## Modernising Data Delivery

GiGL modernised how environmental data is shared in early 2024 by launching new web mapping services for SLA partners, in partnership with Geosphere. The introduction of London Online, alongside Web Mapping Services (WMS) and Web Feature Services (WFS), makes GiGL data easier to access, explore and use— whether users have GIS expertise or not.

These live services replace static data downloads; meaning updates are now automatic, reducing duplication and ensuring partners always work with the most current evidence. By improving accessibility, efficiency and reliability, this development strengthens GiGL’s role as London’s trusted environmental data steward and supports faster, better-informed decisions for nature across the capital.

## Habitat Suitability Mapping

November 2024 saw the release of GiGL’s extensive mapping project for **habitat suitability**. Adapting the methodology used by Hampshire Biodiversity Information Centre, GiGL modelled the potential for restoring or creating ten priority habitats across Greater London.

London was divided into grid cells and each cell was assessed for habitat suitability using robust environmental evidence, including soils, geology, floodplains, land cover, water characteristics and indicator species. Areas unsuitable for habitat creation,

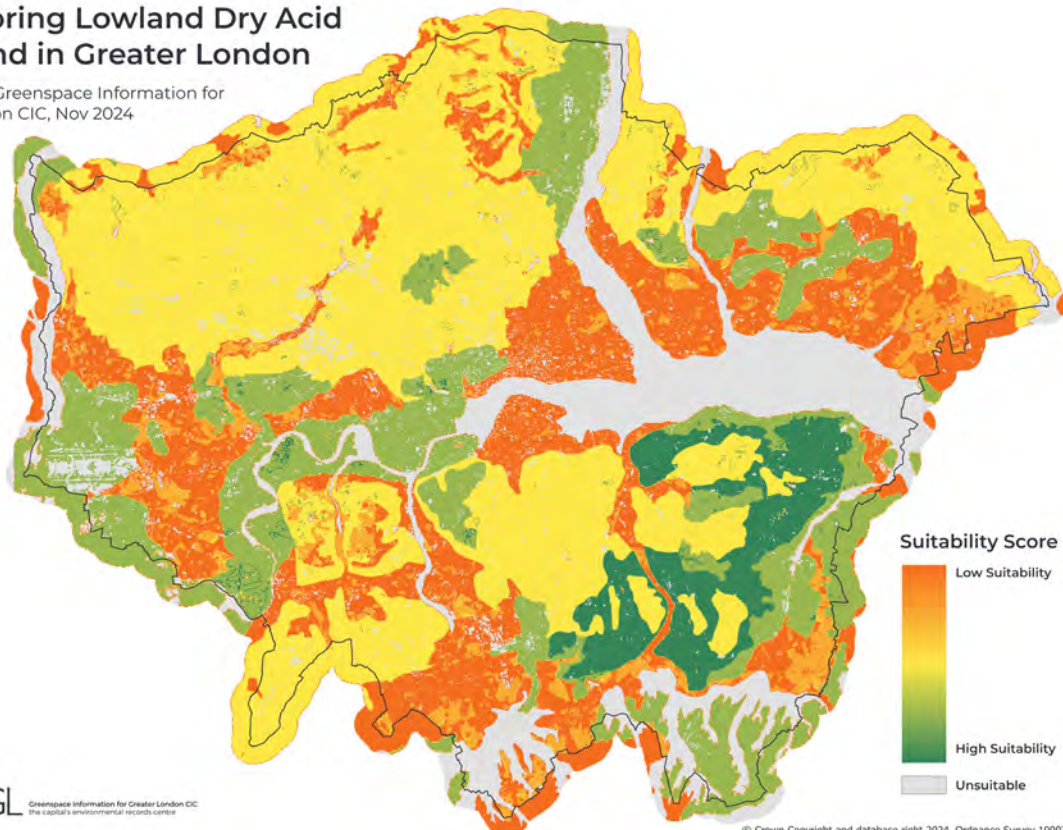
such as dense urban land and transport corridors, were screened out. Each remaining cell was assigned a suitability score, identifying where restoration efforts are most likely to succeed.

The models were validated against known habitat locations and showed strong alignment. The resulting datasets have been used to screen opportunities within London’s Local Nature Recovery Strategy and can be shared with partners via London Online, strengthening evidence-led planning and investment in nature recovery.

*Below: A map produced from the project, grading suitability for the creation or restoration of lowland dry acid grassland (one of the nine London priority habitats).*

### Suitable Locations for Creating or Restoring Lowland Dry Acid Grassland in Greater London

Produced by Greenspace Information for Greater London CIC, Nov 2024



# Acknowledgements

## GiGL Board

- Suzie Jackman
- Amandeep Jethwa
- Mandy Rudd
- Jo Heisse
- Jon Riley
- Stacey Cougill
- Cam Witten
- Nick White
- David Darrell-Lambert

## GiGL Advisory Panel

- Alison Fure
- David Brown
- Elliot Newton
- Jeremy Matthews
- Laurie Baker
- Mark Spencer
- Naomi Pomfret
- Simon Saville
- Valerie Beirne
- Cath Patrick
- Ella Moseley
- Gwen Brassine
- John Archer
- Lizzie Botfield
- Paul Losse
- Sarah Knight
- Valerie Selby

## BNG Advisory Group

- Francis Castro
- John Luckhurst
- Jon Riley
- Marion Macnair
- Mathew Frith
- Nick White
- Paul Mellor
- Rosie Whicheloe
- Stacey Cougill
- Steve Whitbread

## Our Community Network

- Amphibian and Reptile Conservation
- Bat Conservation Trust
- Bumblebee Conservation Trust
- Butterfly Conservation (Herts & Middlesex, Cambridgeshire and Essex, Surrey & SW Branches)
- Essex Field Club
- INNS Mapper
- iRecord
- Kent Reptile and Amphibian Group
- London Amphibian and Reptile Group
- London Fungi Group
- London Geodiversity Partnership
- London Natural History Society
- People's Trust for Endangered Species
- Record Pool
- RSPB Swiftmapper
- Woodlands Farm Trust
- Zoological Society for London (Estuaries & Wetlands section)
- Friends of Groups
- Community Groups
- Members of the public
- Students
- Researchers
- Our community of recorders and verifiers
- Local, regional & national organisations with whom we share data (more info on the webpage: GiGL Partners - GiGL)
- Project partners

## Our Professional Network

- Association of Local Environmental Records Centres
- National Biodiversity Network Trust
- Social Enterprise UK
- National Forum for Biological Recording

## Partners

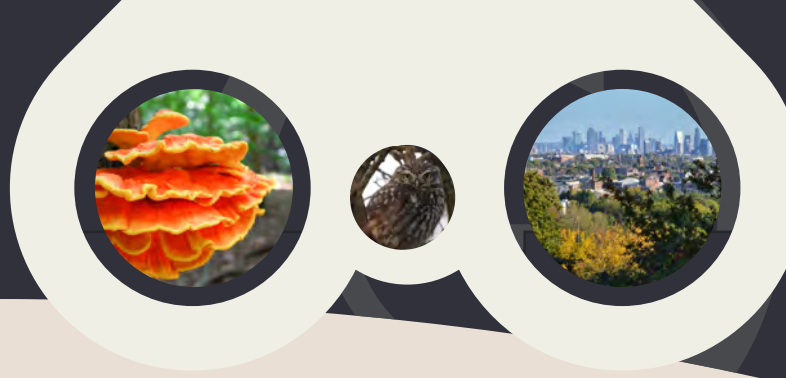
- Affinity Water
- City of London
- City of Westminster
- Environment Agency
- Greater London Authority
- Lee Valley Regional Park Authority
- London Borough of Barking and Dagenham
- London Borough of Barnet
- London Borough of Bexley
- London Borough of Brent
- London Borough of Bromley
- London Borough of Camden
- London Borough of Croydon
- London Borough of Ealing
- London Borough of Enfield
- London Borough of Hackney
- London Borough of Hammersmith and Fulham
- London Borough of Haringey
- London Borough of Harrow
- London Borough of Havering
- London Borough of Hounslow
- London Borough of Islington

- London Borough of Lambeth
- London Borough of Lewisham
- London Borough of Merton
- London Borough of Newham
- London Borough of Redbridge
- London Borough of Richmond
- London Borough of Southwark
- London Borough of Sutton
- London Borough of Tower Hamlets
- London Borough of Wandsworth
- London Borough of Waltham Forest
- London Wildlife Trust
- Network Rail
- Royal Borough of Greenwich
- Royal Borough of Kensington and Chelsea
- Royal Borough of Kingston upon Thames
- Thames Water
- The Royal Parks
- Transport for London (incl. London Underground & Metronet)

# Financial summary

	2024/2025	2023/2024
<b>TURNOVER</b>		
Service Level Agreements	£370,948.00	£239,861.00
Pay As You Use Services	£335,686.00	£288,779.00
Grants	£5,955.00	£74,750.00
<b>TOTAL TURNOVER</b>	<b>£712,589.00</b>	£603,390.00
<b>EXPENDITURE</b>		
<b>Employment Costs</b>		
Salaries, pensions, recruitment, training, travel	£541,803.00	£475,497.00
Hosting (office, HR and finance support)	£64,391.00	£73,435.00
<b>Systems and Kit</b>		
Hardware, software, website, IT support and depreciation	£65,836.00	£29,559.00
<b>Other</b>		
includes legal fees, business advice, subscriptions, insurance and accountancy	£30,057.00	£44,295.00
<b>TOTAL EXPENDITURE</b>	<b>£702,087.00</b>	£622,786.00
<b>OPERATING SURPLUS / (DEFICIT)</b>	<b>£10,502.00</b>	£(19,396.00)
Other interest receivable and similar income	-	-
<b>SURPLUS / (DEFICIT) BEFORE TAXATION</b>	<b>£10,502.00</b>	£(19,396.00)
Tax on Deficit		
includes corporation tax charge and deferred taxation	-£2,409.00	£4,985.00
<b>SURPLUS / (DEFICIT) FOR THE FINANCIAL YEAR</b>	<b>£8,093.00</b>	<b>£(14,411.00)</b>

# Working with us



## GiGL Partners

If you feel that your organisation would benefit from becoming a partner, gaining regular access to reliable and up-to-date information about London's natural environment and GiGL's services and expertise, please [contact the team](#) for an initial discussion of your needs and to arrange a demonstration of our products and services, or for more information go to our [Services for Partners](#) webpage.

## The Public

We actively encourage Londoners to tell us about the wildlife they have seen in the city via our online form and to collaborate with our partners that run campaigns to learn more about particular species, habitats and open spaces. For more information visit our [Working with the Public](#) webpage.

## Clients

We also provide services to clients, including environmental consultants, developers and potential partners. For more information visit our [Clients](#) webpage.

## Recorders and Recording Groups

We provide a range of services to support London's recording experts, from gap analysis and mobilising data through to data validation, analysis and visualisation. For more information visit our [How GiGL Can Help](#) webpage.



# GiGL

Greenspace Information for Greater London CIC  
the capital's environmental records centre

c/o London Wildlife Trust  
Fivefields  
8-10 Grosvenor Gardens  
Victoria, SW1W 0DH

[gigl.org.uk](http://gigl.org.uk) Newsletter: [gigl.org.uk/gigler](http://gigl.org.uk/gigler)



Photo copyright credits top left to right:  
Stephen John Davies, Wayne Hoefmann, Becky Garden.

**GiGL Registered Office:** Greenspace Information for Greater London CIC,  
C/O Sedulo London Office 605, Albert House, 256-260 Old Street, London,  
United Kingdom, EC1V 9DD. Community interest company limited by  
guarantee registered in England and Wales number 8345552

All maps © Crown Copyright and database right 2026. Ordnance Survey  
100032216.GLA