

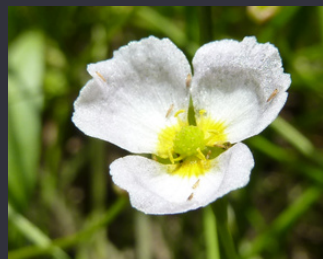
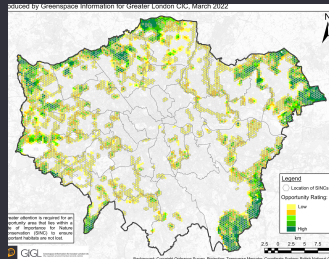


GiGL









Greenspace Information for Greater London CIC
the capital's environmental records centre

Greenspace Information for Greater London CIC

ANNUAL REPORT 2021/22



Contents

	CEO overview of the year	3
	Our Vision and Mission	4
	Community Networks	5
	London Recorders' Day	6
	Data Stewardship	7
	New agreements.....	7
	New or improved data sources.....	7
	New or improved systems and tools.....	9
	Services Provided	10
	Data as a service.....	10
	Information as a service.....	11
	Answers as a service.....	11
	Professional Networks	12
	Data Stewardship	12
	New agreements.....	12
	New or improved data sources.....	13
	New or improved systems and tools.....	13
	Services Provided	15
	Data as a service.....	15
	Information as a service.....	16
	Answers as a service.....	17
	GiGL by Numbers	20
	Financial Summary	21
	Acknowledgements	22
	Working with Us	23



A Year of Achievement and Growth



Mandy Rudd
Chief Executive

We had an incredibly busy year in 2021/22, including several changes within the team that saw long-term colleagues depart to pursue exciting new career opportunities, a chance to offer new challenges to existing GiGLers, and the arrival of several new employees who brought fresh ideas, expertise and enthusiasm to the team just when we needed them most. Some were brought into existing roles, whilst others came to take on new challenges relating to our data stewardship work, specifically updating London's ancient woodland inventory, focusing on species data flow, and an overhaul of our habitat data and related systems as another step towards being able to help our stakeholders deliver context-based biodiversity net gain.

The main focus of our business plan for the period between April 2021 and March 2022 was to 'improve the content, feedback opportunities, and uptake of our data search service'. This was in response to the recommendations of our Biodiversity Evidence – Better Outcomes from Planning (BE-BOP) project, which was funded by the Greater London Authority and ran from October 2019, with [the final report](#) delivered to the GLA in July 2021. This focus involved the whole team in developing new ideas, listening to what our clients need from the service, and implementing the changes.

We welcomed another London borough to our partnership, taking the total number of local authorities to 28, and total number of partners to 36. We also saw an 11% increase in the number of data search reports we provided to our clients in partnership with eCountability, meaning approximately 1100 planning applications were informed by our reports. You can access more information on the uptake of the service per London borough on our website [here](#).

We also continued to develop our community networks. We worked on various projects including negotiating new data exchange agreements, providing data collection support to several community science projects, and provided support and data to regional and national contacts for use in atlas projects and species status reviews. We also collaborated with the Field Studies Council and Natural History Museum on another successful London Recorders Day.

Outside of London, several of the team represented local environmental records centres at a national level, including through Wildlife and Countryside Link, various steering groups focusing on the implementation of biodiversity net gain, and the development of a replacement for Recorder 6. We also achieved [accreditation](#) from the Association of Local Environmental Records Centres for a second time.

CEO overview of the year

Our Vision and Mission

Community Networks

London Recorders' Day
Data Stewardship
Services Provided

Professional Networks

GiGL by Numbers

Financial summary

Acknowledgements

Working with us

Data Stewardship
Services Provided



Our Vision and Mission

GiGL Vision

London’s natural environment is appreciated, understood, considered and improved.



GiGL Mission

Greenspace Information for Greater London CIC (GiGL) is the capital’s environmental records centre.

GiGL mobilises, curates and shares access to data that underpin our knowledge of London’s natural environment, in order to enable our stakeholders to make informed decisions in policy and practice.

We aim to raise awareness of the benefits the natural environment provides to the capital and to ensure the protection and enhancement of London’s natural environment are at the heart of the services GiGL provide.

Our Services

Data Stewardship

We are data custodians. We digitise records, ensure their high quality and safe storage, and make them available for active use. We also provide mapping tools and tools for data collection; survey forms, recording spreadsheets and more.



Advice and Consultancy

We provide expert advice, signposting and advocacy as well as partnership and collaborative working. We help identify and demonstrate priorities for public policy and aid policy compliance; as well as providing a wide range of training, mentoring and academic support for our community.



Data and Insight

We use data to uncover the truth about the world around us. From quantitative facts about recorded wildlife and green infrastructure, to audits of available data, to gap analysis and green infrastructure modelling, statistics & analysis.



Visualisation

Charts, graphics, maps and infographics. Our visual tools are used by consultants, partners, the media and the arts for any number of purposes. Map data or tell a bigger story with visualisations and infographics.



CEO overview of the year

Our Vision and Mission

Community Networks

London Recorders' Day

Data Stewardship

Services Provided

Professional Networks

GiGL by Numbers

Financial summary

Acknowledgements

Working with us

Data Stewardship

Services Provided



Community Networks

To GiGL, Community means the network of individuals and organisations that make up the complex and complicated world of environmental data generation and use, both in Greater London and nationally. Our community is the ad-hoc Saturday species recorder, the organised Friends of group and the national recording scheme. It is the beginner and the expert; volunteer and paid; student, researcher and interested individual. What links all of them is the passion that they bring to their interactions with the natural world.

GiGL would not be the organisation it is without the dedication and enthusiasm of our community. We are proud to provide [specialist services](#) for free for many within the community network, which is part of our commitment as a social enterprise. There are more details on the data sharing partners we have in our community network on our [website](#).

If you have records you would like to share or would like more details on how GiGL can help you or your organisation then please [get in touch](#).



CEO overview of the year

Our Vision and Mission

Community Networks London Recorders' Day
Data Stewardship
Services Provided

Professional Networks

GiGL by Numbers
Financial summary
Acknowledgements
Working with us

Data Stewardship
Services Provided



London Recorders' Day

London Recorders' Day 2021 was our triumphant return to hosting events following the easing of covid-19 restrictions, taking place on 30th October 2021 at the Flett Theatre in the Natural History Museum and for the first time, online!

With our faithful partners of the Natural History Museum and the BioLinks project, funded by the Field Studies Council, an inspiring day of talks and an interactive workshop allowed our attendees to journey with us along the biological data flow pathway that exists in Greater London, from record creation to curation and innovative end uses. We heard from 10 inspiring presenters, many of whom spoke of encouraging new individuals into recording to strengthen the recording community and generate new records, and the pioneering uses of species and site records once they have been created.

We also received updates on exciting ventures from the Angela Marmot Centre for UK Biodiversity and the London Natural History Society. Throughout the day attendees enjoyed opportunities for networking and conversation away from the stage. The day finished with our Community Officers Ben Town and Victoria Kleanthous delivering an interactive workshop on data flow – a first for GiGL and an activity that, in the absence of being able to deliver tours of the Natural History Museum, proved to be a popular success with delegates!

Read more about the day [here](#).

Talks from the day:

Beavers in London

Elliot Newton - Citizen Zoo

Does nature make us happy?

Sarah Knight - University of York

The Urban Nature Project

John Tweddle - Angela Marmot Centre for UK Biodiversity

Big City Butterflies Project

Steve Bolton - Butterfly Conservation

GiGL's Data Search Report Service

Eleni Foui - GiGL

How species records transformed the campaign to save Warren Farm from developers

Katie Boyles - Warren Farm Nature Reserve

Ancient Woodland Inventory Update Project

Frankie Moorman - GiGL

The DECIDE Project; recording nature where it matters

Michael Pocock - UK Centre for Ecology and Hydrology

60 Years of moth recording in a London wood

David Howdon - Selbourne Society

Stag Beetles and Londoners; from postcard to Instagram

Mathew Frith



CEO overview of the year

Our Vision and Mission

Community Networks **London Recorders' Day**

Data Stewardship

Services Provided

Professional Networks

GiGL by Numbers

Financial summary

Acknowledgements

Working with us

Data Stewardship

Services Provided



Data Stewardship

—○ New agreements

Kent Reptile and Amphibian Group

In November 2021 GiGL was approached by Kent Reptile and Amphibian Group (Krag) to discuss data sharing between the two organisations. There is a substantial crossover between the boundary of the vice county of Kent and GiGL's working remit of Greater London and so it was a fantastic opportunity to ensure that each organisation had access to all the amphibian and reptile records within this crossover area. It also means that recorders can be reassured that records sent to one organisation will be available for use by the other, without having to double the effort of sharing with both.

Having a data sharing agreement between the two organisations is a huge benefit to both and to the conservation efforts in place for amphibians and reptiles. More information on the work that Krag do can be found on their website: <https://kentarg.org/>

If you think your organisation would benefit from having a data sharing agreement with GiGL then please [get in touch](#).



Common Frog

Photo credit:
Neil Hall



Slow Worm

Photo credit:
Mike Waite



Smooth Newt

Photo credit:
Gail Hampshire



—○ New or improved data sources

Technical Process for iRecord

It was GiGL's aim for 2021/22 to incorporate London's data from the recording app [iRecord](#) into our own systems as part of our wider business plan focus on improving the content, feedback opportunities and uptake of our commercial services. The process involved navigating the download and manipulation of the iRecord dataset extract into a format that we can incorporate. This will make the whole process as easy as a couple of clicks. The incorporation of iRecord data and all schemes and projects that feed into it (including [iNaturalist](#)), allows us to reassure our recording community that there now exists a simple record integration route for feeding into the GiGL database for those already familiar with these recording apps and who have been working hard to collect data via these apps and schemes. Records centres have privileged access to some of the data on iRecord, so the activity also reassures our clients that our commercial services are informed by this important national resource.



CEO overview of the year

Our Vision and Mission

Community Networks London Recorders' Day

Data Stewardship

Services Provided

Professional Networks

GiGL by Numbers

Financial summary

Acknowledgements

Working with us

Data Stewardship

Services Provided

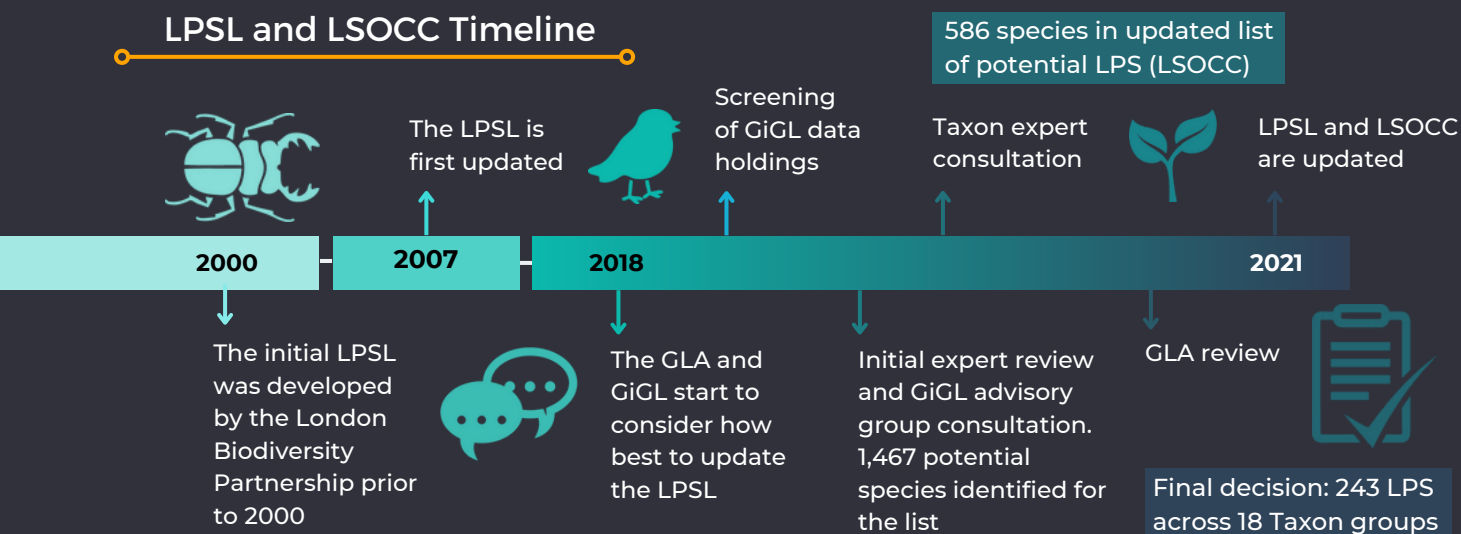


London Priority Species List

In June 2021 the London Biodiversity Action Plan Priority Species List (LPSL) was updated in the GiGL system. In addition to the LPSL list of 243 species, GiGL felt it was important to retain the penultimate draft list of species sent to the Greater London Authority (GLA), as this contained 586 species considered by experts to be of conservation concern. A decision was made to update the London Species of Conservation Concern (LSOCC) to match this wider list. Both the LPSL and LSOCC are now referenced in all of GiGL's relevant outputs, including data search reports, ensuring that these species are flagged as being of concern and priority.

The LPSL can be [found on the GLA website](#).

LPSL and LSOCC Timeline



Brown Hare

Photo credit: Andy Fisher



Water Vole

Photo credit: Mark Bridger

CEO overview of the year

Our Vision and Mission

Community Networks

London Recorders' Day

Data Stewardship

Services Provided

Professional Networks

GiGL by Numbers

Financial summary

Acknowledgements

Working with us

Data Stewardship

Services Provided



—o New or improved systems and tools

Rare Plant Register and Axiophyte list

Greater London does not have a rare plant register (RPR) or axiophyte list but they are both extremely useful for assessing sites and monitoring change in site condition over time. When GiGL was approached by Mark Spencer, London Natural History Society (LNHS) Flowering Plant Recorder, to see if we would support the development of these lists we jumped at the opportunity. Data extracts from GiGL's plant species dataset were sent to Mark for the development of the RPR, and to Paul Losse and Julija Fediajevaite for the work on Greater London's axiophyte list. The work is currently in progress but it is hoped that we will have these two really important and useful lists to add to our toolbox soon. Once completed they will form part of GiGL's services.

Axiophyte

a plant species which is an indicator of a habitat of interest for nature conservation such as ancient woodland. They are not rare plant species nor are they common across a wide range of habitats but they may be very common in habitats of high value.



Lesser Water-plantain
Photo credit: Mark Spencer

Rare plant

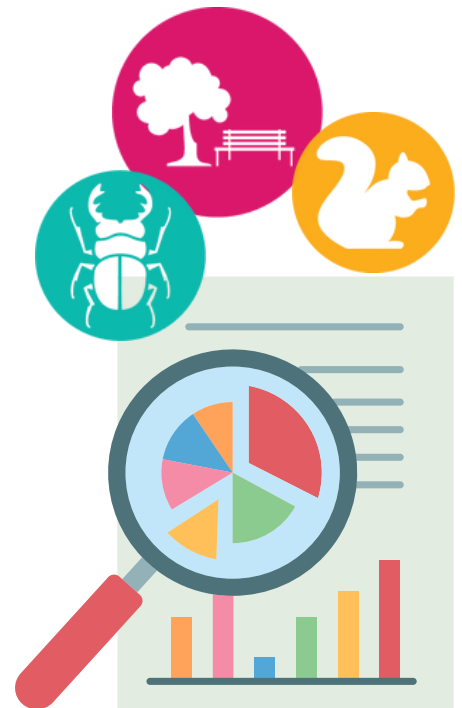
found in a limited number of sites and important in their own right but not necessarily linked to a habitat of interest for nature conservation, though they may be used to provide evidence for the designation of SINC.



Yellow Archangel
Photo credit: Paul Losse

Community Data Search Reports

Through work with community and friends of groups we have developed a new community service. GiGL's bespoke community reports went live in 2021 and offers these groups deep dives into the specific areas of London that they are so passionate about. It allows us to share the work that the groups have been doing by recording on their site as well as add context from our datasets. We produce a public-friendly document to outline the species, habitat and designations for any site in London. We work with these community groups to ensure that the reports are tailored to their needs and best fit their aims and uses. Originally devised as a community alternative to our client data search report service, the report allows the same data to be displayed and shared in a less technical public facing report that can be used by the groups for promotional and publicity purposes.



CEO overview of the year

Our Vision and Mission

Community Networks London Recorders' Day

Data Stewardship
Services Provided

Professional Networks

GiGL by Numbers

Financial summary

Acknowledgements

Working with us

Data Stewardship

Services Provided



Services Provided

—o Data as a service

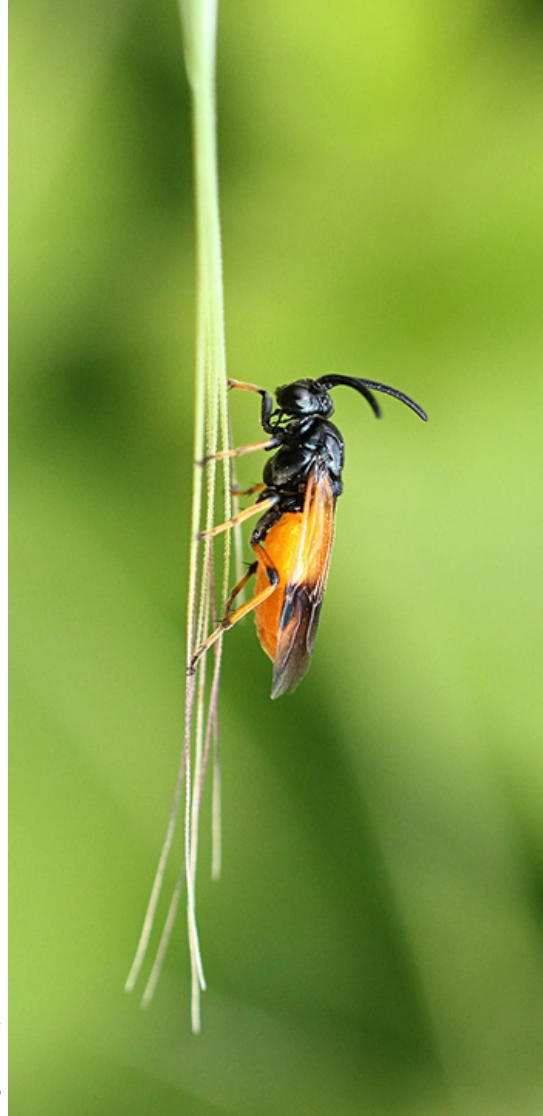
Sawfly Review

In 2021 the first ever Great Britain level IUCN Red List conservation review of Sawflies was launched by [Andy Musgrove](#). The review requires the occurrence of each species to be assessed against the IUCN Red List criteria to determine their national threat status. Without a full review of the status of sawfly species there is no way to represent them in conservation policy or legislation.

To assess the occurrence of each species Andy needed access to sawfly records. Due to the large number of sawfly species found in Britain (currently thought to be around 550), the work has been split into 3 phases. Phase 1 covers 11 smaller families, comprising 111 species. The large family Tenthredinidae will be reviewed in Phases 2 and 3 (Phase 3 covering the subfamily Nematinae). GiGL has shared all of the records we have of sawflies for Phase 1 and looks forward to participating in the subsequent phases.

Bramble Sawfly

Photo credit:
Penny Metal



Student Requests

Through the 2021/22 financial year, as part of our work as a social enterprise, GiGL completed 20 requests to assist with student and researcher work. The bulk of requests we receive are from London-based institutions, but GiGL were contacted from students far and wide, with several requests from continental Europe (Austria and Switzerland) and even one hailing from China! The requests encompassed 17 data requests, 2 meetings and 2 requests for expert advice.



CEO overview of the year

Our Vision and Mission

Community Networks

London Recorders' Day

Data Stewardship

Services Provided

Professional Networks

GiGL by Numbers

Financial summary

Acknowledgements

Working with us

Data Stewardship

Services Provided



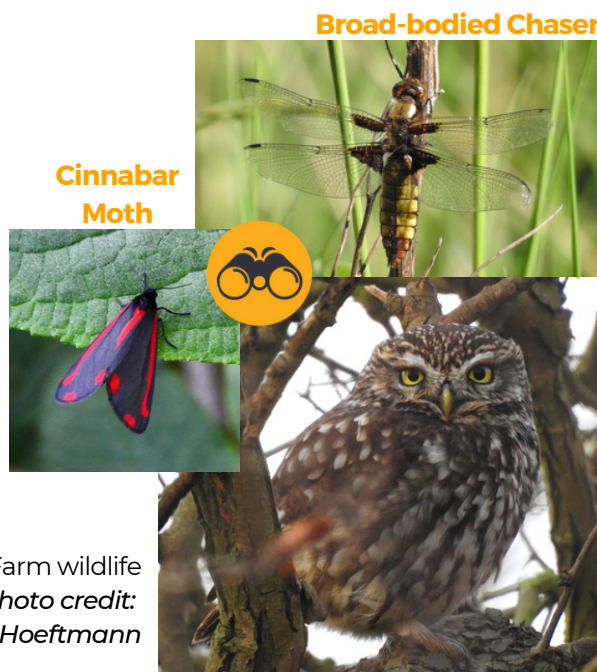
—o Information as a service

Throughout 2021/22 we have continued to honour our commitment to our community and have supported community groups and community recording in London. We have offered training on biological recording as well as our free-of charge community data search reports, helping to keep our community well informed, inquisitive and enthusiastic about nature in the capital.

Warren Farm

At [London Recorders' Day 2021](#) we heard from Katie Boyles and her endeavors on [Warren Farm](#) in Ealing, where the community have been working together to save the site from development. Katie first came to us as a recording novice passionate about protecting this site close to her heart, and GiGL has been supporting her and the Warren Farm community group throughout their recording journey. With our help and support Warren Farm has become one of the most recorded open spaces in London! This has opened up all kinds of opportunities for designation and protection and the group now regularly host recording events and nature walks.

Warren Farm wildlife
Photo credit:
Wayne Hoeftmann



—o Answers as a service

Over the 2021/22 year we worked with a number of recorders and verifiers, and national recording schemes, providing data analysis and outputs and helping to digitise data, including beginning work for a new London butterfly atlas similar to those made previously [here](#).

DECIDE Project

We contributed to the ongoing [DECIDE project](#), a notable and nationally important community partner endeavour that aims to direct recorders towards under-recorded locations and under-loved taxa. We have provided support from the idea stage up to the drafting of an app and the formation of ideas and techniques for making it a success. GiGL contributed to the co-design of the web app and attended a week residency to work and collaborate on the project with a team based across the UK.



CEO overview of the year

Our Vision and Mission

Community Networks

London Recorders' Day

Data Stewardship

Services Provided

Professional Networks

GiGL by Numbers

Financial summary

Acknowledgements

Working with us

Data Stewardship

Services Provided



Professional Networks

GiGL's professional networks comprise of our [partners](#) and [clients](#), along with other professional bodies and representatives across the UK with aligned goals and interests. They play a key role in the growth of GiGL as an organisation, sharing their professional insight and industry knowledge. The income generated through our service level agreements (SLA) and pay-as-you-use services enables us to invest in all the data stewardship work that underpins and improves our services, and allows us to work free of charge for our extensive community networks.

GiGL collaborates on many multi-partner projects, involving both professional and community network members who come together to share diverse passions and expertise with the ultimate goal of benefitting London's natural environment.

If you would like more details on becoming an SLA partner or how we can help with multi-partner projects then please [get in touch](#).



Data Stewardship

—o New agreements

We gained three new service level agreement [partners](#) between April 2021 and March 2022, including the London Borough of Barnet, Affinity Water and Thames Water (for the Crane Catchment region). This took our total to 36 partners, including 28 out of the 33 London Boroughs. Our partners have access to robust information about London's natural environment as well as access to specialist services and our team's expertise.

28



Local
Planning
Authorities

3



Infrastructure & Utilities

3



Charity or Regional Park Authority

2



Government (Regional/Agency)

GiGL Partners 2021/22



CEO overview of the year

Our Vision and Mission

Community Networks

London Recorders' Day

Data Stewardship

Services Provided

Professional Networks **Data Stewardship**

GiGL by Numbers

Financial summary

Acknowledgements

Working with us

Services Provided



12

—○ New or improved data sources

Designated sites datasets for the following Local Authorities were updated in 2021/22.

Greenbelt and Metropolitan Open Land updates

Provided and processed

Bromley
Hillingdon

Section improvements

Camden
Croydon
LLDC Queen Elizabeth Olympic Park
Newham
Westminster

SINC updates

including many cross boundary metropolitan sites

Barnet
Bexley
Camden
City of London
Croydon
Ealing

Greenwich
Haringey
Hounslow
Kingston Upon Thames
Tower Hamlets
Westminster

Proposed SINC updates

Lewisham
Lambeth
Bexley



—○ New or improved systems and tools

GiGL is constantly working to maintain and improve our vital site datasets. In October 2021, the [Open Space dataset](#) was expanded with the addition of new access categories. This includes more detailed restricted information, so sites can be categorised depending on factors such as entry cost (if any), age restrictions (e.g. playgrounds) and opening times (e.g. if they're closed over specific seasons).

Another important milestone was achieved in our [Greenbelt and Metropolitan Open Land \(MOL\) datasets](#). With the addition of Bromley in April 2021, we completed coverage of all of Greater London with information directly from Local Planning Authorities. Previously, the dataset was additionally sourced from the Department for Communities and Local Government (DCLG). GiGL's datasets will continue to be updated with all policy changes.

Habitat Database

In December 2021, work began on the dataset improvement plan for the new HLU (habitats and land use) dataset. Work undertaken in the 2021/22 financial year included reclassifying water polygons, correcting overlapping polygons and assigning classifications to unidentified habitats. Work also began on assessing translations between different habitat classification systems, focusing specifically on the UKHab classification system. This was as part of preparations for the HLU dataset to be used in the process of meeting mandatory biodiversity net gain requirements, which requires UKHab for habitat surveys.

CEO overview of the year

Our Vision and Mission

Community Networks

London Recorders' Day

Data Stewardship

Services Provided

Professional Networks Data Stewardship

GiGL by Numbers

Financial summary

Acknowledgements

Working with us

Services Provided



Areas of Deficiency

Areas of Deficiency in Access to Nature (SINC AoD):

Areas where people have to walk more than 1 km to reach an accessible Sites of Importance for Nature Conservation (SINC) of Metropolitan or Borough Importance.



Areas of Deficiency in Access to Public Open Spaces (POS AoD):

Areas outside of maximum distances which London residents should have to travel to access a Public Open Space (POS), which are defined in the London Plan and set out in the Local Plan.

At the start of the 2021/22 financial year, the GiGL team were hard at work updating and improving our two Area of Deficiency (AoD) models. Although the core methodology wasn't changed, there was a big update in how we run our calculations and we have greatly expanded what the model can do. A more streamlined method using up-to-date tools and road network data was developed, building on the reliable model previously used. We also moved software to enable faster and more efficient processing, and added easy to use customisable features to allow the model to be tailored for a wide variety of uses.

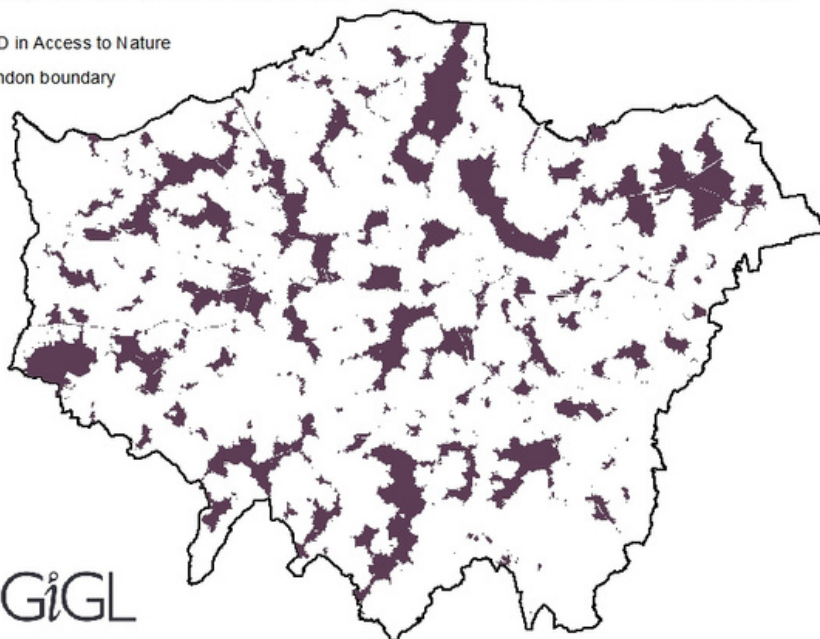
The result provides even more scope for predictive and custom modelling, giving us greater flexibility to help planners explore the different options for reducing AoD. We can now model AoD to show how changes to site boundaries or their access will impact AoD. We can also model AoD for specific sites and distances, such as how many people live within 1 km of an accessible play area.

In June 2021 the updated SINC AoD map was published, based on the new model, and POS maps followed in 2022. Both are updated every quarter, and you can read more about this and their uses, in our newsletter [here](#).

Areas of Deficiency (AoD) in Access to Nature

Produced by Greenspace Information for Greater London CIC June 2021

■ AoD in Access to Nature
□ London boundary



Greenwich Peninsula Ecology Park
(Accessible borough grade SINC)

Photo credit: James Farrell

CEO overview of the year

Our Vision and Mission

Community Networks

London Recorders' Day

Data Stewardship

Services Provided

Professional Networks Data Stewardship

GiGL by Numbers

Financial summary

Acknowledgements

Working with us

Services Provided

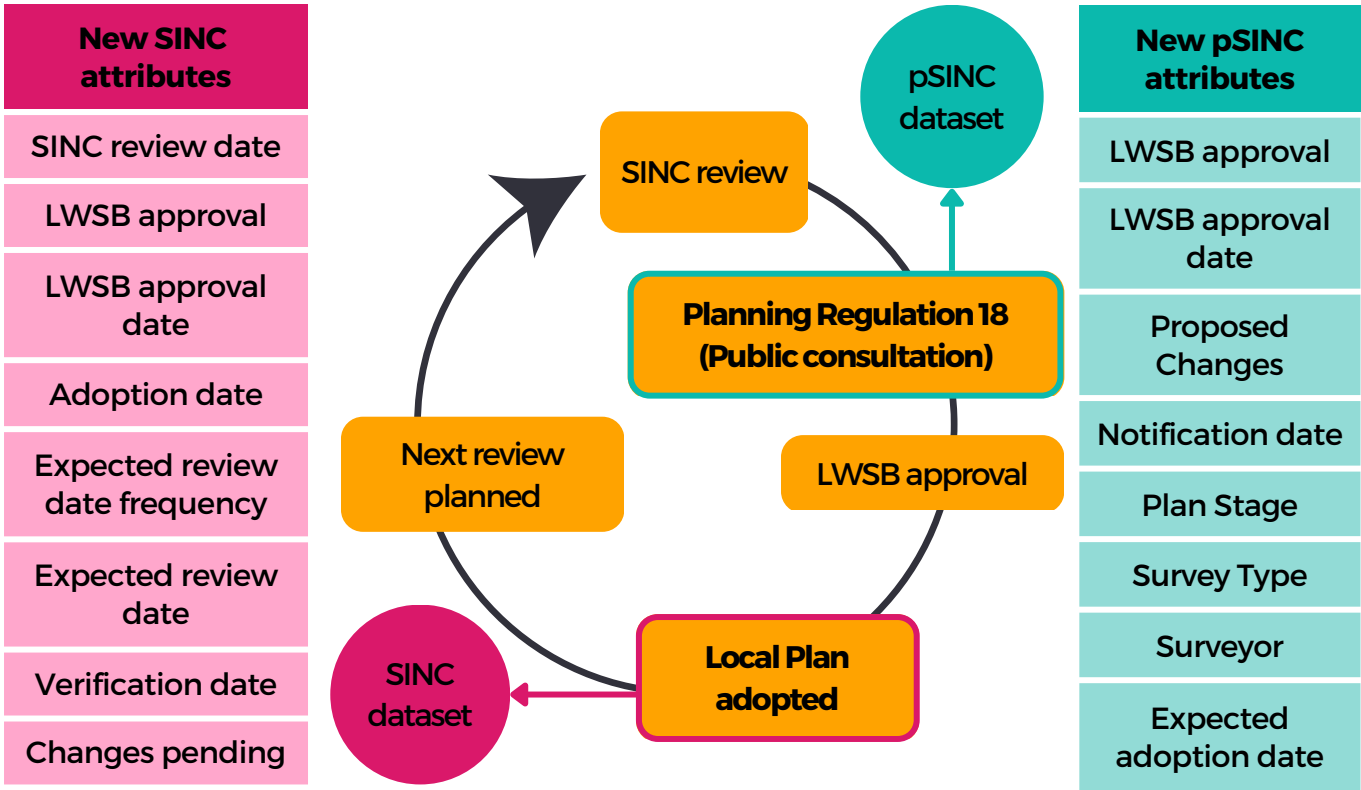


Services Provided

—○ Data as a service

SINC Data Provision

In the 2021/22 financial year GiGL made some huge steps in improving our Sites of Importance for Nature Conservation (SINC) dataset. In collaboration with the London Wildlife Sites Board (LWSB), we led on improvements to the information we hold in the SINC evidence base. New attributes were added, incorporating additional details such as important planning dates. Critically, we also worked to create a new off shoot of the SINC dataset; proposed SINC (pSINC). Launched in April 2021, this includes new sites, or changes to sites that have entered public consultation but have not yet been officially adopted within a Local Plan. As there can be a long gap between SINC reviews and official adoption, the pSINC dataset allows these sites to be shared with GiGL’s partners and clients to benefit their conservation.



That’s not all. In July 2021 we also published an [open dataset of SINC boundaries](#) in Greater London. This contains boundaries and a limited number of attributes from GiGL’s full SINC dataset that were released as open data to support developers, web applications, policy and research questions under open licence. The dataset provides the name and grade of each site and is intended as an indication of the SINC network in London. The up-to-date version is only accessible via GiGL services.

CEO overview of the year
Our Vision and Mission
Community Networks

London Recorders' Day
Data Stewardship
Services Provided

Professional Networks

GiGL by Numbers
Financial summary
Acknowledgements
Working with us

Data Stewardship

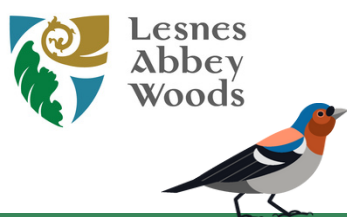
Services Provided



Lesnes Abbey Woods Bird Survey Report



Throughout 2021 bird surveyors at Lesnes Abbey Woods, Bexley, conducted transects across the site as part of a long-term volunteer-led survey to provide baseline data regarding those species present. As in previous years, this data had been sent to our team for incorporation into the London-wide database. Ian Holt, Lesnes Abbey Woods Estate Manager, approached the Partnership Team in early 2022 to provide a bespoke report highlighting the findings of these bird surveys. Thanks to the London Borough of Bexley's service level agreement we were able to provide this bespoke service, and produced a report with data insights in the form of summary tables and graphs showing species recorded for different habitats and time of year.



"At Lesnes Abbey Woods we have had the pleasure of working with GiGL for many years, most recently on our annual bird survey. Volunteer recorders submit data on a monthly basis which GiGL then uses to produce an annual report. This report and the maps, graphs, and tables within it bring life and meaning to the stats which can otherwise so often sit in spreadsheets, unseen and unused. GiGL's knowledge and expertise add huge value to our work and have inspired us to do more."

- Ian Holt

Lesnes Abbey Woods Estate Manager

Sector 5a survey results

Habitat: Deciduous woodland

Survey months:

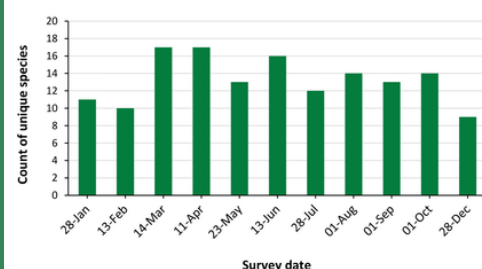
Winter - December, January, February

Spring - March, April, May

Summer - June, July, August

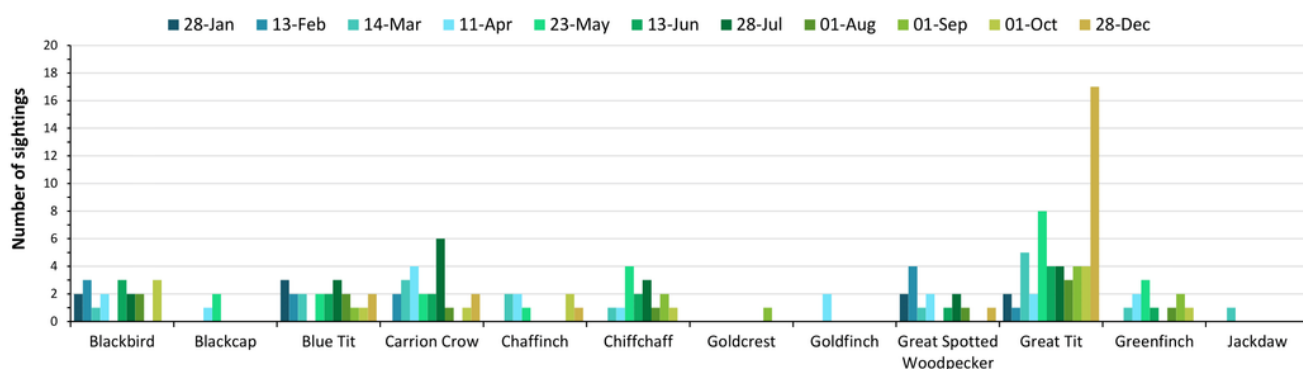
Autumn - September, October

▼ The number of unique species recorded in Sector 5a in each survey.



Common name	Taxon name	Abundance
Blackbird	<i>Turdus merula</i>	18
Blackcap	<i>Sylvia atricapilla</i>	3
Blue Tit	<i>Cyanistes caeruleus</i>	20
Carriion Crow	<i>Corvus corone</i>	23
Chaffinch	<i>Fringilla coelebs</i>	8
Chiffchaff	<i>Phylloscopus collybita</i>	15
Goldcrest	<i>Regulus regulus</i>	1
Goldfinch	<i>Carduelis carduelis</i>	2
Great Spotted Woodpecker	<i>Dendrocopos major</i>	14
Great Tit	<i>Parus major</i>	54
Greenfinch	<i>Chloris chloris</i>	11
Jackdaw	<i>Coloeus monedula</i>	1
Jay	<i>Garrulus glandarius</i>	11
Long-tailed Tit	<i>Aegithalos caudatus</i>	17
Magpie	<i>Pica pica</i>	13
Nuthatch	<i>Sitta europaea</i>	2
Ring-necked Parakeet	<i>Psittacula krameri</i>	91
Robin	<i>Erithacus rubecula</i>	74
Song Thrush	<i>Turdus philomelos</i>	1
Treecreeper	<i>Certhia familiaris</i>	10
Whitethroat	<i>Curruca communis</i>	2
Woodpigeon	<i>Columba palumbus</i>	22
Wren	<i>Troglodytes troglodytes</i>	37
Total abundance		450
Total species count		23

▼ The number of recorded sightings of each species in Sector 5a by survey date.



CEO overview of the year

Our Vision and Mission

Community Networks

London Recorders' Day

Data Stewardship

Services Provided

Professional Networks

Data Stewardship

Services Provided

GiGL by Numbers

Financial summary

Acknowledgements

Working with us



Biodiversity Net Gain and the London Boroughs Biodiversity Forum

In December 2020, we started facilitating online meetings for the London Boroughs Biodiversity Forum (LBBF), due to the pandemic restricting in-person meetings. During the 2021/22 financial year we continued to facilitate quarterly meetings as well as three additional meetings to discuss Local Nature Recovery Strategies in London and members’ responses to the Biodiversity Net Gain (BNG) consultation. In our regular updates section, we took the opportunity to ask other members of the LBBF about what they see our role in BNG being and how we can support them with BNG requirements. We received some helpful insights that helped with planning our future work.

We worked on our response to Defra’s BNG consultation and also provided inputs to ALERC’s and Wildlife and Countryside Link’s responses. We highlighted the importance of using a robust evidence base to inform all aspects of BNG delivery. We recommended that the process should be prescriptive and that minimum requirements are set of checking open data sources (MAGIC, NBN Atlas) and local environmental records centres (LERC) data. We also welcomed the mention of LERCs as data repositories for BNG data and advocated to make this a requirement.



—○ Answers as a service


Data Facilitation for Oak Processionary Moth Management

Over the summer months of 2021 The Royal Parks conducted surveys for Oak Processionary Moth nests in Richmond and Bushy Parks, which then informed nest removal work. GiGL assisted the project by digitising nest survey and removal data collected by volunteers, staff and contractors, and then producing updated maps to inform subsequent days’ surveys and removals. 2021 was the seventh consecutive year GiGL has worked alongside The Royal Parks on this project, with our involvement instrumental in ensuring data collected by the survey and removal teams were available for analysis and operational use on a daily basis.



Oak Processionary Moth
Photo credit:
Ben Sale

- CEO overview of the year
Our Vision and Mission
Community Networks
- London Recorders’ Day
Data Stewardship
Services Provided

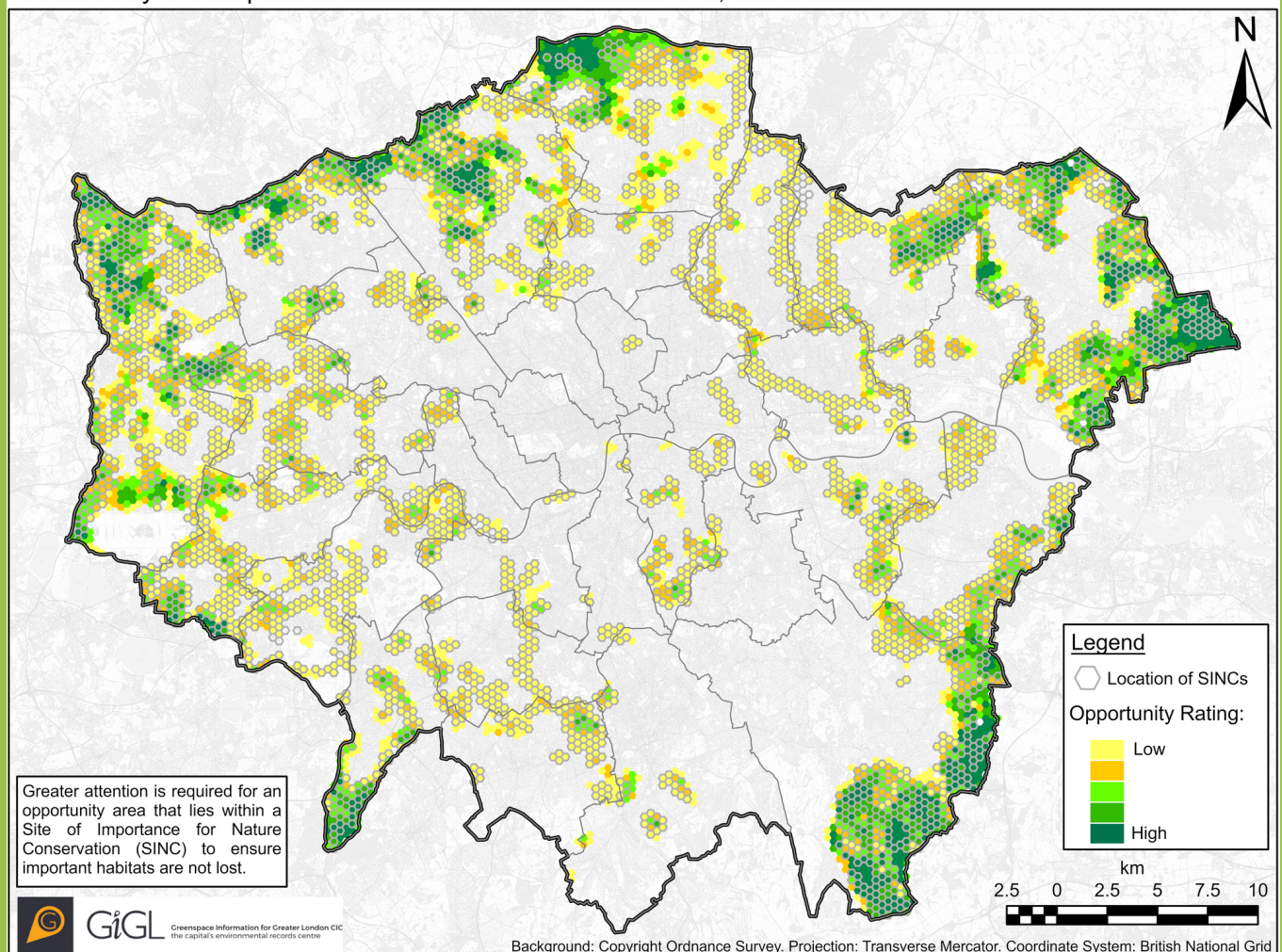
- Professional Networks
GiGL by Numbers
Financial summary
Acknowledgements
Working with us
- Data Stewardship
Services Provided
- 
- 17

Opportunity Mapping

The Forestry Commission contracted GiGL to carry out woodland opportunity mapping for the London Urban Forestry Partnership (LUFP). The main aim was to identify priority areas within Greater London's Green Belt or Metropolitan Open Land (MOL) that would be appropriate for new woodland planting. Using ArcGIS, areas of appropriate Green Belt and MOL were scored based on proximity to existing woodland, soil type, climate risk, flood risk and location within an Area of Deficiency. A hexagon grid map of these scores was made, and information on ownership and management were provided to the Forestry Commission alongside this. They will now use this information to identify potential landowners and their enthusiasm to plant new woodland, to engage and provide information to encourage creation and work with partners to deliver some targeted advice.

Opportunity Areas for Woodland Creation in Greater London with SINCs

Produced by Greenspace Information for Greater London CIC, March 2022



CEO overview of the year

Our Vision and Mission

Community Networks

London Recorders' Day

Data Stewardship

Services Provided

Professional Networks Data Stewardship

GiGL by Numbers

Financial summary

Acknowledgements

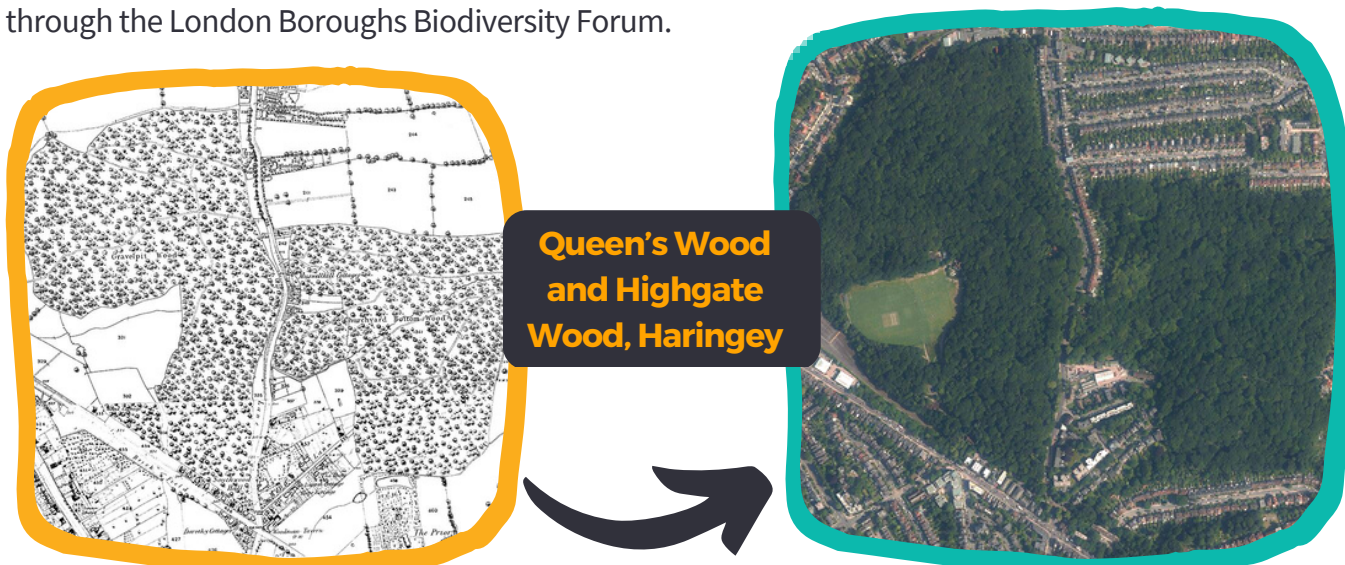
Working with us

Services Provided



Ancient Woodland Inventory Update Project

Since commencing the Ancient Woodland Inventory (AWI) Update project in September 2021, GiGL has hit the ground running to ensure that this review of the location and extent of ancient woodland across Greater London is completed efficiently. Having started Phase 1 of the Natural England Methodology, we have begun capturing the boundaries of sites within GIS that reflect long-established woodland using 1st Edition OS Counties Series (Epoch 1) maps from the mid to late 1800s, OS MasterMap, and aerial photographs. These long-established sites will then be further investigated for specific evidence of ancientness in later phases of the project. To provide support during this review process, we have set up a project advisory group of local expert stakeholders. We have also communicated the importance of the project to members of the public at London Recorders' Day and to Local Planning Authority staff through the London Boroughs Biodiversity Forum.



Historic and County Series Mapping (Greater London Epoch 1 maps in ArcGIS): © Crown copyright and Landmark Information Group Ltd. All rights reserved 2021. Aerial Photography: © Getmapping Plc and Bluesky International Limited 2021

Greater London Authority 10 Minute Walk Map

GiGL worked with the Greater London Authority (GLA) to produce the [10 Minute Walk Map](#) to identify areas where people live more than a 10 minute walk from a reasonably sized green space (0.02ha) in order to help target greening. The map is based on a subset of GiGL's Spaces to Visit dataset which provides an open source of information on open spaces in Greater London that are available to the public as destinations for leisure, activities and community engagement (including green corridors that provide opportunities for walking and cycling). GiGL then used our proprietary model that measures and maps areas within a certain walking distance to sites, to identify areas more than 800m walking distance from the selected Spaces to Visit.



CEO overview of the year

Our Vision and Mission

Community Networks

London Recorders' Day

Data Stewardship

Services Provided

Professional Networks

Data Stewardship

GiGL by Numbers

Financial summary

Acknowledgements

Working with us

Services Provided



GiGL by Numbers

Species

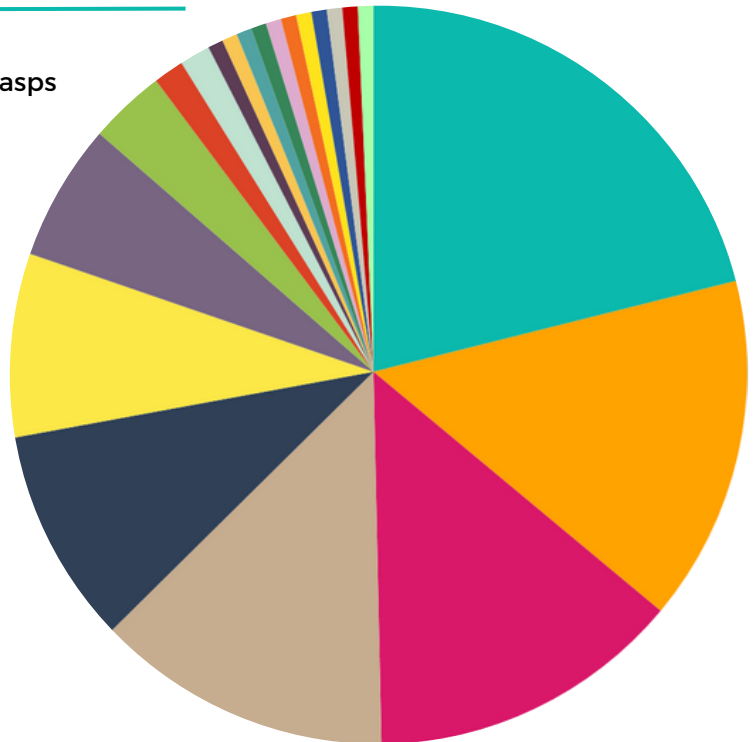
137 surveys uploaded
containing **115945**
species records



234 new taxa recorded
including **148**
new species...



- 31 ■ Invertebrates - Beetles
- 22 ■ Invertebrates - Ants, Bees, Sawflies & Wasps
- 20 ■ Invertebrates - True Bugs
- 19 ■ Fungi
- 14 ■ Invertebrates - Moths
- 12 ■ Invertebrates - True Flies
- 9 ■ Higher Plants - Flowering Plants
- 5 ■ Invertebrates - Spiders
- 2 ■ Invertebrates - Butterflies
- 2 ■ Invertebrates - Flatworms
- 1 ■ Invertebrates - Booklice
- 1 ■ Invertebrates - Crustaceans
- 1 ■ Invertebrates - Fleas
- 1 ■ Invertebrates - Harvestmen
- 1 ■ Invertebrates - Mayflies
- 1 ■ Invertebrates - Millipedes
- 1 ■ Invertebrates - Segmented Worms
- 1 ■ Invertebrates - Snakeflies
- 1 ■ Invertebrates - Ticks & Mites
- 1 ■ Lichens
- 1 ■ Slime Moulds



Sites



86

SINC's updated

97 proposed
SINC's added



52

MOL sites updated

111

Greenbelt sites updated



Communications



1101

GiGLer
newsletter subscribers

3288 Twitter
followers

264 LinkedIn followers



507

Facebook
followers

CEO overview of the year

Our Vision and Mission

Community Networks

London Recorders' Day

Data Stewardship

Services Provided

Professional Networks

GiGL by Numbers

Financial summary

Acknowledgements

Working with us

Data Stewardship

Services Provided



20

Financial Summary

	21/22	20/21
TURNOVER		
Service Level Agreements	188,133	146,946
Pay as you use services	318,892	266,790
Grants	24,658	21,514
TOTAL TURNOVER	531,683	435,250
EXPENDITURE		
<i>Employment Costs</i>		
Salaries, pensions, recruitment, training, travel	430,371	381,934
Hosting (office, HR and finance support)	69,020	67,416
<i>Systems and kit</i>		
Hardware, software, website, IT support and depreciation	18,829	9,383
<i>Other</i>		
includes legal fees, business advice, subscriptions, insurance and accountancy	25,842	16,864
TOTAL EXPENDITURE	544,062	475,597
OTHER OPERATING INCOME	-	-7,351
Job Retention Scheme	-	6,766
OPERATING DEFICIT	-12,379	-33,581
Other interest receivable and similar income	-	27
DEFICIT BEFORE TAXATION	-12,379	-33,554
Tax on Deficit		
includes corporation tax charge and deferred taxation	1,987	5,972
DEFICIT FOR THE FINANCIAL YEAR	-10,392	-27,582

CEO overview of the year

Our Vision and Mission

Community Networks

London Recorders' Day

Data Stewardship

Services Provided

Professional Networks

GiGL by Numbers

Financial summary

Acknowledgements

Working with us

Data Stewardship

Services Provided



Acknowledgments

GiGL would like to thank the following people and organisations for their contributions over the 2021/22 year:

GiGL Board:

- Suzie Jackman - GiGL chair
- Aman Jethwa - GiGL treasurer
- Tony Burton
- Jo Heisse
- Saskie Laing
- Jon Riley
- Mandy Rudd
- Richard Smith

GiGL Advisory Panel:

- Alison Fure
- David Brown
- Elliot Newton
- Jeremy Matthews
- Laurie Baker
- Mark Spencer
- Naomi Pomfret
- Simon Saville
- Valerie Beirne
- Cath Patrick
- Ella Moseley
- Gwen Brassine
- John Archer
- Lizzie Botfield
- Paul Losse
- Sarah Knight
- Valerie Selby

Biodiversity Evidence - Better Outcomes for Planning Project Advisory Group:

- Samantha Davenport
- John Archer
- Jon Best
- Iain Boulton
- Valerie Selby
- David Warburton
- Steve Whitbread

AWI Update Advisory Group

- Tony Wileman
- John Archer
- Ben Connor
- Richard Pearce
- Mathew Frith
- Charlotte Moss

Data providers:

- Amphibian and Reptile Conservation
- Bat Conservation Trust
- Butterfly Conservation (Herts & Middx, Cambridgeshire and Essex, Surrey)
- Diocese of London
- Essex Field Club
- Kent Reptile and Amphibian Group
- LivingRoofs.org
- London Amphibian and Reptile Group
- London Bat Group
- London Fungi Group
- London Geodiversity Partnership
- London Natural History Society (sections)
- People's Trust for Endangered Species
- Woodlands Farm Trust
- Zoological Society for London (Estuaries & Wetlands section)

Our Community networks:

- Friends of Groups
- Community Groups
- Members of the public
- Students
- Researchers
- Our community of recorders and verifiers
- Local, regional & national organisations with whom we share data (more info on the webpage: GiGL Partners - GiGL)
- Project partners

Professional bodies:

- Association of Local Environmental Records Centres (ALERC)
- National Biodiversity Network (NBN)

Partners:

- Affinity Water
- City of London
- City of Westminster
- Environment Agency
- Greater London Authority
- Lee Valley Regional Park Authority
- London Borough of Barking and Dagenham
- London Borough of Barnet
- London Borough of Bexley
- London Borough of Bromley
- London Borough of Camden
- London Borough of Ealing
- London Borough of Hackney
- London Borough of Hammersmith and Fulham
- London Borough of Haringey
- London Borough of Harrow
- London Borough of Havering
- London Borough of Hounslow
- London Borough of Islington
- London Borough of Lambeth
- London Borough of Lewisham
- London Borough of Merton
- London Borough of Newham
- London Borough of Redbridge
- London Borough of Richmond
- London Borough of Southwark
- London Borough of Sutton
- London Borough of Tower Hamlets
- London Borough of Wandsworth
- London Wildlife Trust
- Royal Borough of Greenwich
- Royal Borough of Kensington and Chelsea
- Royal Borough of Kingston upon Thames
- Thames Water (Crane catchment)
- The Royal Parks
- Transport for London (incl. London Underground and Metronet)

CEO overview of the year

Our Vision and Mission

Community Networks

London Recorders' Day

Data Stewardship

Services Provided

Professional Networks

GiGL by Numbers

Financial summary

Acknowledgements

Working with us

Data Stewardship

Services Provided



Working With Us

GiGL Partners



If you feel that your organisation would benefit from becoming a partner, gaining regular access to reliable and up-to-date information about London's natural environment and GiGL's services and expertise, please contact the team for an initial discussion of your needs and to arrange a demonstration of our products and services, or for more information go to <https://www.gigl.org.uk/contact/>

Clients



We also provide services to clients, including environmental consultants, developers and potential partners. For more information go to <https://www.gigl.org.uk/working-with-us/clients/>

The Public



We actively encourage Londoners to tell us about the wildlife they have seen in the city via our online form and to collaborate with our partners that run campaigns to learn more about particular species, habitats and open spaces. For more information go to <https://www.gigl.org.uk/working-with-us/the-public/>

Recorders and Recording Groups



We provide a range of services to support London's recording experts, from gap analysis and mobilising data through to data validation, analysis and visualisation. For more information go to <https://www.gigl.org.uk/how-gigl-can-help/>



GiGL Office

C/o London Wildlife Trust,
Dean Bradley House,
52 Horseferry Road, London SW1P 2AF



Online

Website: www.gigl.org.uk
Newsletter: www.gigl.org.uk/gigler



Twitter



Facebook



LinkedIn



Instagram

GiGL Registered Office

Greenspace Information for Greater London CIC, 10 Queen Street Place, London EC4R 1BE, community interest company limited by guarantee registered in England and Wales number 8345552

© Crown Copyright and database right 2022. Ordnance Survey 100032216. GLA

Front cover photo credits: Wayne Hoeftmann, Mark Ramsey, Andy Fisher, Penny Metal, Mark Spencer, Mike Waite.

Page 3 photo credits: Conall.

Page 14 photo credits: Benjamin Ragheb.

This report was designed using [Canva.com](https://www.canva.com)

