

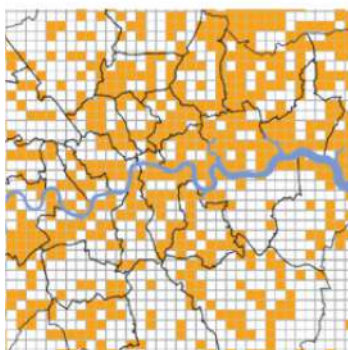


GiGL

Greenspace Information for Greater London CIC
the capital's environmental records centre

Greenspace Information for Greater London CIC

ANNUAL REPORT 2019/20



A Year Of Achievement



Mandy Rudd
Chief Executive

In order to write this 'note from our chief executive' I have been reflecting on both the 2019/20 financial year, and how we got to this point since our inception as a grant-funded project in 1996, which was part of London Wildlife Trust. Our main areas of focus in the early days were species data and how they could be used to inform nature conservation in Greater London. How times have changed.

Fast forward to 2013, and GiGL separated from London Wildlife Trust to become a social enterprise, set up to benefit individuals and organisations that generate and consume data on London's natural environment, and Londoners more generally, who benefit from evidence-based decisions that are informed by our services. We are committed both as a community interest company (CIC) and as a local environmental records centre (LERC) to operating on a not-for-profit basis, which means that instead of making a profit for shareholders, we reinvest profit back into the community we were set up to serve.

People are always at the heart of what we do, and we work at a national, regional and local level to improve our services for our stakeholders. During the past financial year, we spent a day with our colleagues in the LERCs in the south-east to learn from what they're doing in their counties, as well as discussing collaboration at a regional level. We consulted with funding partners on how they're using our services and to help them get more out of what we do via our lunch and learn event. We ran the second London Recorders Day with the Natural History Museum and Field Studies Council, and collaborated with key partners on the Big Green London Map project, which promotes local parks and associated 'friends' groups to Londoners via the #GoParksLondon website. We were even involved in a theatre production, something we'd never have foreseen back in the early days!

We invest our profits in various ways, from employing several staff who provide services free of charge to the recording community, students and researchers and organisations with a lower turnover than ours, to improving systems and our core datasets on an ongoing basis. During the 2019/20 financial year we created a database officer role to focus solely on improving key datasets, invested in a new habitat database in anticipation of an increase in demand for reliable data to inform the design and implementation of biodiversity net gain, and became 'IT independent' through investment in our systems and external IT support.

Our Vision and Mission

GiGL Vision

London's natural environment is appreciated, understood, considered and improved.



GiGL Mission

Greenspace Information for Greater London CIC (GiGL) is the capital's environmental records centre.

GiGL mobilises, curates and shares access to data that underpin our knowledge of London's natural environment, in order to enable our stakeholders to make informed decisions in policy and practice.

We aim to raise awareness of the benefits the natural environment provides to the capital and to ensure the protection and enhancement of London's natural environment are at the heart of the services GiGL provide.

Our Services



Data Curation

We are data custodians. We digitise records, ensure their high quality and safe storage, and make them available for active use. We also provide mapping tools and tools for data collection, survey forms, recording spreadsheets and more.



Advice and Consultancy

We provide expert advice, signposting and advocacy as well as partnership and collaborative working. We help identify and demonstrate priorities for public policy and aid policy compliance; as well as providing a wide range of training, mentoring and academic support for our community.



Data and Insight

We use data to uncover the truth about the world around us. From quantitative facts about recorded wildlife and green infrastructure, to audits of available data, to gap analysis and green infrastructure modelling, statistics & analysis.



Visualisation

Charts, graphics, maps and infographics. Our visual tools are used by consultants, partners, the media and the arts for any number of purposes. Map data or tell a bigger story with visualisations and infographics.

Partner 'Lunch and Learn' Event

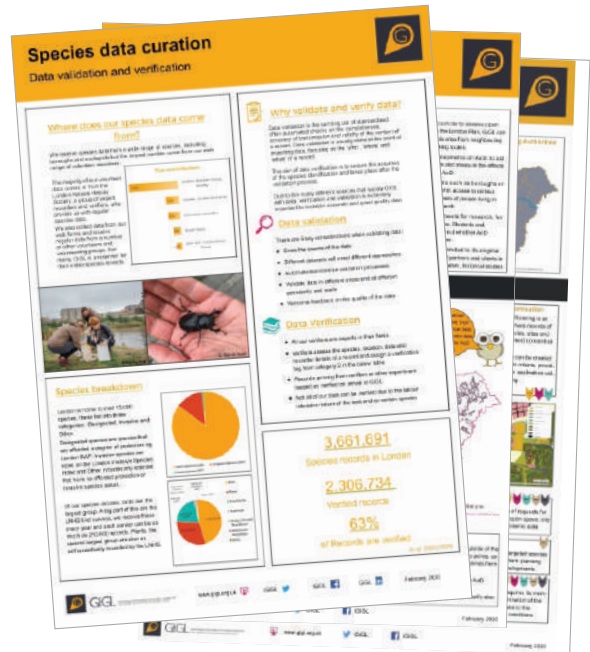
GiGL held its first 'lunch and learn' event at GiGL HQ on February 12th 2020.

The consultation with stakeholders event was designed to enable partners (current or former) to meet each other, meet the GiGL team, and spend time talking about service level agreements (SLAs) and ideas for getting more out of these partnership contracts.

Structured around interpreted poster displays, a live data demonstration and three talks, the event proved very popular with the 17 guests from 14 organisations. In terms of impact, four new partners joined in spring 2019!

To find out more about the event, visit:

<https://www.gigl.org.uk/show-tell-lunch-and-learn-event/>



Posters displayed at the event: Biodiversity Evidence, Areas of Deficiency in access, Species data curation

GoParksLondon

GiGL is a proud supporter of the work of GoParksLondon in promoting London's huge diversity of parks, raising awareness of the critical role that parks' volunteer Friends Groups - around 700 in London - play, and working to generate public support for parks to help protect them for future generations.

In 2019-20, GiGL successfully collaborated with other consortium members - CPRE London, London Friends of Green Spaces Network, Revolution Consultancy and Design, and National Park City Foundation - on a funding bid to City Bridge Trust to deliver the GoParksLondon project.

Essex Skipper Photo Credit: Alison Fure



Each park in London has been identified on the interactive map and has its own 'mini home page', with a link to GiGL Discover-London providing information about the nature and wildlife of the park, and, where it's been provided to GiGL, information about the park from its Friends Group.

To find out more about GoParksLondon, visit:

<https://www.goparks.london/> and to see an example of GiGL's information that the GoParksLondon website links to, visit: <https://www.goparks.london/park/clapham-common>

New Habitat Database

In the summer of 2019, work started on creating a brand new habitat database. GiGL's legacy habitat datasets have served us, our partners and our stakeholders incredibly well, but the diversity and coverage of having the new database will provide greater opportunities to better monitor, understand and improve the habitat landscape.

Little Egret *Photo Credit: Tom Fitton*
Broad Bodied Chaser *Photo Credit: Wayne Hoeftmann*



The new habitat database has the potential to revolutionise the ways in which we can study the natural environment in London, and GiGL is confident the database will better support both The Mayor's London Environment Strategy and the delivery of Biodiversity Net Gain.

For more information about the new habitat database - what it is, why we created it, how it will be used, and who can access it - visit:

<https://www.gigl.org.uk/show-tell-the-new-gigl-habitat-database/>



Scale 1:3500 at A3

Based on the Ordnance Survey 1:25,000 map © Crown copyright and database right 2019 Ordnance Survey 100009076 1:25,000

London Recorders' Day 2019



On November 2nd 2019, natural historians, conservationists, educators and data managers of London came together at the Natural History Museum, for the second annual London Recorders' Day.

The event was co-organised and hosted by GiGL, the Field Studies Council (FSC) Biolinks Project and the Natural History Museum Angela Marmot Centre for UK Biodiversity.

The varied talks and displays discussed the joy of studying nature, skills and careers, diversity and inclusiveness, and the use of biological records in practice.

The meeting of just over 160 recorders and speakers, from various backgrounds, was a vital celebration of the tremendous skills and expertise that devoted natural historians in London have, and underlined the importance of making sure this work counts towards improved understanding and appreciation of London's nature.

To find out more about the event, visit:

<https://www.gigl.org.uk/london-recorders-day-2019/>

Species Data

All of GiGL's 5.2 million species records - 763,801 of which were added in 2019-20 - are a record of an encounter between humans and wildlife.

It was a pleasure to work with all the recorders, recording groups and data verifiers and alongside species experts in 2019-20, and to hear what a positive impact working with them has on their lives and on nature and conservation.

"As a recorder for GiGL it has a direct impact on my wellbeing. Recording is a vital part of conservation thus in a small way by having my records on a database somewhere makes me feel as though I have contributed to nature and conservation something that a little black book in a desk would never do."

Dave Clark April 2019



Albino Squirrel

Photo Credit:
Nicola Macmillan



Pipistrelle Bat

Photo Credit:
Alison Fure



Zebra Spider

(Moat Close)

Photo Credit:
Tom Fitton



Gatekeeper

(Northala Fields)

Photo Credit:
Jane Ruhland



5 Spot Burnet Moth

(Islip Manor Meadows)

Photo Credit:
Jane Ruhland



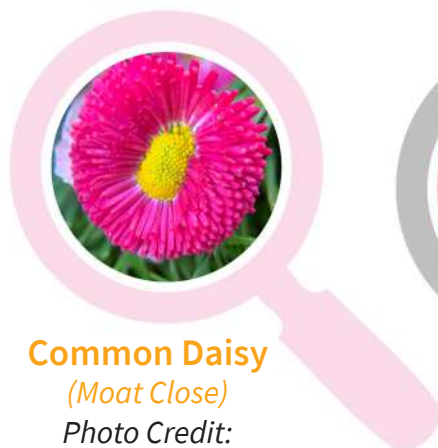
Stag Beetle

Photo Credit:
Mandy Rudd



Caddisfly

Photo Credit:
Dr Ian Wallace



Common Daisy

(Moat Close)

Photo Credit:
Tom Fitton

'Croyfest'

Known affectionately as 'Croyfest' by GiGL staff who attended it, the one day workshop in Croydon on January 14th 2020, provided GiGL staff with a great opportunity to meet, learn and share expertise with colleagues from other Local Environmental Records Centres (LERCs) from the London and South East Regions LERC Group (LaSER).



Photo Credit: Alistair Kirk, Surrey Biodiversity Information Centre

Interactive Theatre Experience



GiGL was one of a number of partner organisations that provided subject matter experts, in an interactive theatre production called ZOH (the Greek word for life) at London's first eco-conscious nightclub, Studio 338 in Greenwich, on November 13th and 14th 2019.

The Enlightenment Café production used the UN's Millennium Ecosystem Assessment, the Independent Futures Forum's World Game, and the real stories of four women from around the world, to provide audiences with a glimpse into the lives of climate witnesses in 2019 and 2050.

Being involved in the production was a great opportunity for GiGL experts to join ZOH's Agents of Change to tell stories of real people inspiring change on the front line of the climate emergency, to help halt humanity's extinction.

"While there's plenty of talk, at the moment, about bridging the gap between arts and science, this is a show that actually does it; and provides a good, exhausting, thought-provoking night out, into the bargain."

**** Joyce McMillan, The Scotsman (Deadinburgh)



Photo Credits: Alex Brenner Photography.

Investment in IT

GiGL became 'IT independent' in 2019-20. Some of GiGL's IT systems had historically been shared, or integrated, with London Wildlife Trust (LWT), who continue to provide GiGL with office space. So, GiGL embarked on and completed a project in 2019-20, to reconfigure and migrate GiGL's hardware and software, so that it is now completely independent from LWT. This proved to be a timely investment which had a positive impact during enforced home-working, due to COVID-19 in 2020.

And, after an audit of the hardware and software used by the GiGL team, a standard set of software was installed on all work computers, and four new desktop computers and a new laptop were purchased.



Financial Summary

	2019/20	2018/19
TURNOVER		
Service Level Agreements	176,537	175,405
Pay As You Use Services	236,468	193,348
Grants	30,257	2,892
TOTAL TURNOVER	443,262	371,645
EXPENDITURE		
<i>Employment Costs</i>		
Salaries, pensions, recruitment, training, travel	348,017	281,583
Hosting (office, HR and finance support)	76,032	54,248
<i>Systems and Kit</i>		
Hardware, software, website, IT support and depreciation	16,840	36,477
<i>Other</i>		
includes legal fees, business advice, subscriptions, insurance		
and accountancy	9,724	14,213
TOTAL EXPENDITURE	450,613	386,521
OPERATING DEFICIT	-7,351	-14,876

Working With Us



GiGL Partners

If you feel that your organisation would benefit from becoming a partner, gaining regular access to reliable and up-to-date information about London's natural environment, please contact Chloe Smith, GiGL Partnership Manager, for an initial discussion of your needs and to arrange a demonstration of our products and services, or for more information go to

<https://www.gigl.org.uk/working-with-us/partners/>



Clients

We also provide services to clients, including environmental consultants, developers and potential partners. For more information go to <https://www.gigl.org.uk/working-with-us/clients/>



The Public

We actively encourage Londoners to tell us about the wildlife they have seen in the city via our online form and to collaborate with our partners that run campaigns to learn more about particular species, habitats and open spaces. For more information go to <https://www.gigl.org.uk/working-with-us/the-public/>



Recorders and Recording Groups

We provide a range of services to support London's recording experts, from gap analysis and mobilising data through to data validation, analysis and visualisation. For more information go to <https://www.gigl.org.uk/how-gigl-can-help/>



GiGL Office

C/o London Wildlife Trust,
Dean Bradley House,
52 Horseferry Road, London
SW1P 2AF

Phone

020 7261 0447



Online

Website: www.gigl.org.uk
News: www.gigl.org.uk/gigler
Twitter: www.twitter.com/iGiGL
Facebook: www.facebook.com/iGiGL
LinkedIn: Greenspace Information for Greater London CIC

GiGL Registered Office

Greenspace Information for Greater London CIC, 10 Queen Street Place, London EC4R 1BEA, community interest company limited by guarantee registered in England and Wales number 8345552

© Crown Copyright and database right 2021. Ordnance Survey 100032216. GLA



Front Cover Photo Credits: iStock, Jane Ruhland, Tom Fitton, Mandy Rudd, Rahul Chavan and Alison Fure.

Designed by Wendy Lee Design, wendyleedesigner@gmail.com