



LONDON NATURAL HISTORY SOCIETY

BOTANY • ECOLOGY & ENTOMOLOGY • LONDON BIRD CLUB • BOOKHAM COMMON SURVEY • HAMPSTEAD HEATH SURVEY

ABOUT US

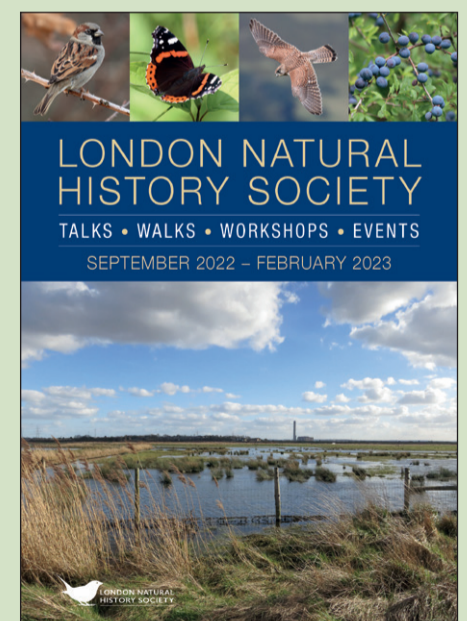
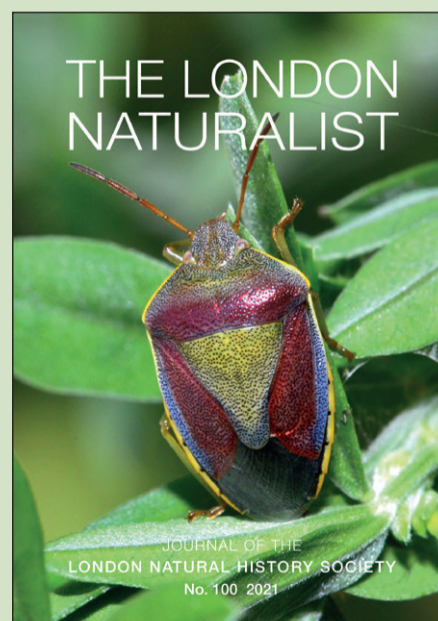
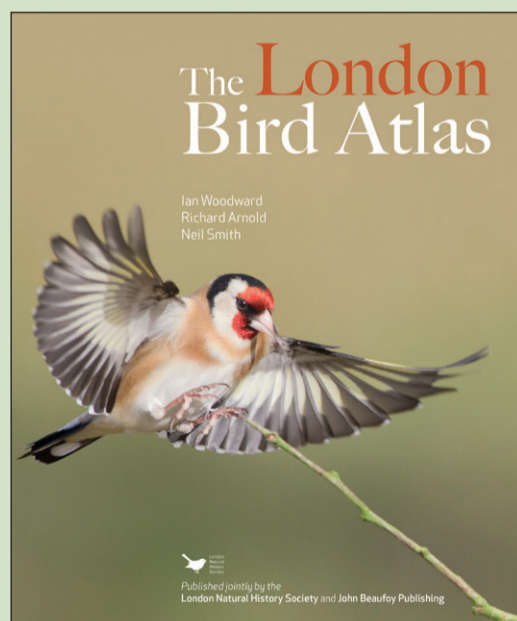
The London Natural History Society (LNHS) is a local natural history society concerned with recording the wildlife of London, covering a circular area of a 20-mile radius from St. Paul's Cathedral. The society's aims include fostering the appreciation and study of London's wildlife and natural environment and assisting in the conservation of wildlife in the London area by helping to record it. This recording activity is coordinated by a number of dedicated and hard-working recorders each of whom takes responsibility for a particular taxonomic group.

ACTIVITIES

The London Natural History Society has five active sections including two long term survey projects (listed above). This results in a highly varied programme of talks, organised nature walks, workshops and other activities. The variety and number of events organised for members, make the LNHS one of the most active nature societies in the world run entirely by volunteers. Whether it is purely for enjoyment and recreation, or in order to develop field skills for a career in conservation, the LNHS offers everyone a wide range of indoor and outdoor activities.

PUBLICATIONS

The LNHS also has a raft of publications provided free to members. The **London Naturalist** is its annual journal with scientific papers as well as lighter material such as book reviews. The annual **London Bird Report** is an important compilation of bird records during a year. It also carries ornithological papers. Furthermore, there is a quarterly LNHS **Newsletter** which carries many trip reports, features and useful announcements. The LNHS maintains its annual membership subscription at a very modest level representing fantastic value for money.



LIBRARY

The LNHS Library is located in the Angela Marmont Centre for UK Biodiversity in the Natural History Museum and new books and periodicals on natural history are added each year. The LNHS library is run by a volunteer librarian and is available for reference by both members of the LNHS and the general public. In addition, books can be borrowed by LNHS members.